

\$3,940,000 - 31 Pinnacle Ridge Drive Sw, Rural Rocky View County

MLS® #A2269063

\$3,940,000

5 Bedroom, 6.00 Bathroom, 4,602 sqft
Residential on 2.32 Acres

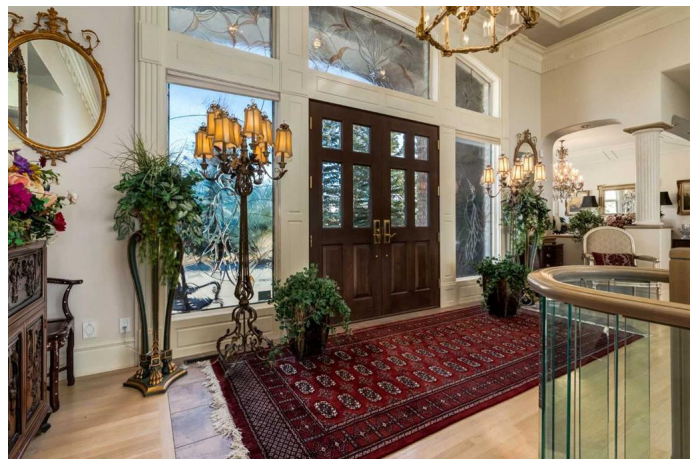
Pinnacle Ridge, Rural Rocky View County,
Alberta

Set within the exclusive enclave of Pinnacle Ridge, this extraordinary estate offers more than 8,400 square feet of refined living space on a 2.32-acre private corner lot, surrounded by immaculate landscaping and breathtaking mountain vistas.

Designed with timeless sophistication and modern comfort in mind, this six-bedroom, six-bathroom walkout bungalow captures panoramic views of the Rocky Mountains and the sweeping river valley beyond. Every element of the home reflects meticulous craftsmanship and architectural excellence—creating an inviting retreat only minutes from Stoney Trail, premier schools, fine dining, and every major city convenience.

The residence welcomes you with stately curb appeal, intricate stonework, and resort-inspired grounds. At its heart lies a newly constructed pool and cascading waterfall, forming a tranquil centerpiece for outdoor gatherings and relaxation alike.

Inside, dramatic vaulted ceilings, custom millwork, ornate columns, and dazzling chandeliers set a tone of elegance throughout. The floor plan offers perfect flow and function, featuring a formal study, elegant dining room, private den with French doors, a wine cellar,



and a spacious billiard and entertainment area on the lower level.

The chef's kitchen blends sophistication and practicality with premium appliances, extensive cabinetry, and tile flooring designed for both beauty and ease of care. Multiple fireplaces enhance the home's warmth and ambiance, creating inviting spaces for family and guests.

Each of the bedrooms is generously scaled, with the primary suite offering a private sanctuary complete with a spa-inspired ensuite, an expansive dressing room, and a secluded deck that frames the most spectacular mountain views imaginable.

Completing this remarkable estate is a triple attached garage with dedicated motorhome parking, offering abundant space for vehicles and recreational storage.

A rare opportunity to own one of Calgary's signature residences where privacy, prestige, and proximity come together in perfect harmony.

Built in 1999

Essential Information

MLS® #	A2269063
Price	\$3,940,000
Bedrooms	5
Bathrooms	6.00
Full Baths	5
Half Baths	1
Square Footage	4,602
Acres	2.32
Year Built	1999
Type	Residential

Sub-Type	Detached
Style	Acreage with Residence, Bungalow
Status	Active

Community Information

Address	31 Pinnacle Ridge Drive Sw
Subdivision	Pinnacle Ridge
City	Rural Rocky View County
County	Rocky View County
Province	Alberta
Postal Code	T3Z 3N7

Amenities

Amenities	Other
Parking	Garage Door Opener, Garage Faces Front, Heated Garage, Insulated, Oversized, RV Garage, Triple Garage Attached
# of Garages	3

Interior

Interior Features	Bar, Bookcases, Breakfast Bar, Built-in Features, Ceiling Fan(s), Central Vacuum, Chandelier, Closet Organizers, Crown Molding, Double Vanity, French Door, Granite Counters, High Ceilings, Jetted Tub, Kitchen Island, Natural Woodwork, No Animal Home, No Smoking Home, Open Floorplan, Recessed Lighting, Smart Home, Soaking Tub, Storage, Vaulted Ceiling(s), Walk-In Closet(s), Wet Bar, Wired for Data, Wired for Sound, Recreation Facilities
Appliances	None
Heating	High Efficiency, In Floor, Fireplace(s), Forced Air, Natural Gas
Cooling	Central Air
Fireplace	Yes
# of Fireplaces	6
Fireplaces	Gas
Has Basement	Yes
Basement	Full

Exterior

Exterior Features	Balcony, Barbecue, BBQ gas line, Private Yard
Lot Description	Back Yard, Backs on to Park/Green Space, Corner Lot, Front Yard, Fruit Trees/Shrub(s), Landscaped, Lawn, Many Trees, No Neighbours Behind, Open Lot, Paved, Private, Treed, Underground Sprinklers,

	Views, Secluded, Waterfall, Yard Lights
Roof	Concrete
Construction	Brick, Concrete, Wood Frame
Foundation	Poured Concrete

Additional Information

Date Listed	November 7th, 2025
Days on Market	1
Zoning	R1
HOA Fees	1100
HOA Fees Freq.	ANN

Listing Details

Listing Office	RE/MAX House of Real Estate
----------------	-----------------------------

Data is supplied by Pillar 9â„¸ MLSÂ® System. Pillar 9â„¸ is the owner of the copyright in its MLSÂ® System. Data is deemed reliable but is not guaranteed accurate by Pillar 9â„¸. The trademarks MLSÂ®, Multiple Listing ServiceÂ® and the associated logos are owned by The Canadian Real Estate Association (CREA) and identify the quality of services provided by real estate professionals who are members of CREA. Used under license.