

\$214,900 - 215, 550 Prominence Rise Sw, Calgary

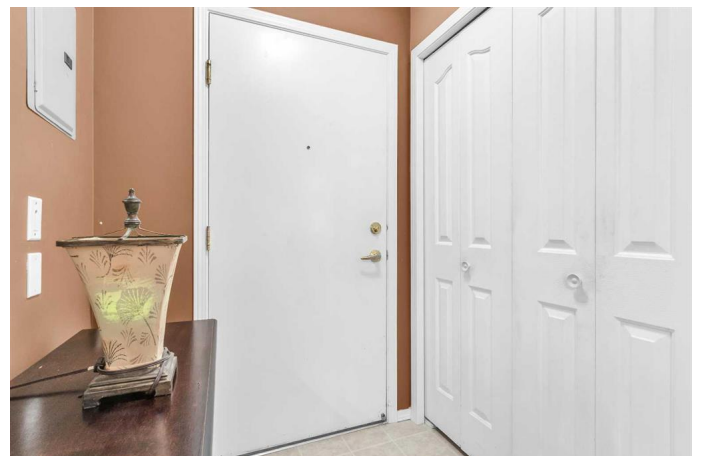
MLS® #A2257936

\$214,900

1 Bedroom, 1.00 Bathroom, 678 sqft
Residential on 0.00 Acres

Patterson, Calgary, Alberta

Don't miss out on this top floor, 1-bedroom plus a Den. It is ideally located in a professionally managed, 55+ age-restricted complex. It offers both a comfortable and low-maintenance lifestyle. Perfect for those seeking a peaceful living environment. It has a well designed layout with many features including a Kitchen with ample counter space and cabinets. The adjacent dining area is perfect for entertaining family and friends. The Living Room is a quiet retreat featuring lots of windows and a glass door to access the balcony extending the living space to the outdoors. The Bedroom includes a wall wardrobe closet, and the large full bathroom offers additional storage with two large moveable cabinets (included) and a generous linen closet. The Den is currently used for storage but offers flexibility and could easily be set up as a separate computer room or study. Cabinets in Den are included for extra storage. Convenient in the suite laundry (building also has a separate laundry room for Residents). You will be amazed with the many amenities and activities this complex offers! Stay active with the fitness room, relax in the library or TV room, or play a game of pool or shuffleboard in the games room. There's also a dining room for social gatherings, hair salon, emergency calling device and a guest suite for visitors. This is a pet friendly complex with Board Approval (restrictions apply). There is an outdoor sitting area for residents to enjoy and lots of visitor parking. Condo Fee includes



utilities (Heat, water & Electricity). Excellent location, close to community parks, walking paths, transit, shopping, restaurants and easy access to major roads through out the city. This is a great opportunity to add your personal touch and make this unit your own. A pleasure to show!

Built in 2003

Essential Information

MLS® #	A2257936
Price	\$214,900
Bedrooms	1
Bathrooms	1.00
Full Baths	1
Square Footage	678
Acres	0.00
Year Built	2003
Type	Residential
Sub-Type	Apartment
Style	Single Level Unit
Status	Active

Community Information

Address	215, 550 Prominence Rise Sw
Subdivision	Patterson
City	Calgary
County	Calgary
Province	Alberta
Postal Code	T3H 5J1

Amenities

Amenities	Elevator(s), Recreation Room, Visitor Parking, Laundry
Parking	Off Street

Interior

Interior Features	Elevator, Recreation Facilities
Appliances	Dishwasher, Dryer, Electric Stove, Refrigerator, Washer, Window

	Coverings
Heating	Hot Water
Cooling	None
# of Stories	2

Exterior

Exterior Features	Balcony
Roof	Asphalt Shingle
Construction	Brick, Stucco, Wood Frame

Additional Information

Date Listed	September 17th, 2025
Days on Market	54
Zoning	DC (pre 1P2007)

Listing Details

Listing Office	RE/MAX Complete Realty
----------------	------------------------

Data is supplied by Pillar 9â„¢ MLSÂ® System. Pillar 9â„¢ is the owner of the copyright in its MLSÂ® System. Data is deemed reliable but is not guaranteed accurate by Pillar 9â„¢. The trademarks MLSÂ®, Multiple Listing ServiceÂ® and the associated logos are owned by The Canadian Real Estate Association (CREA) and identify the quality of services provided by real estate professionals who are members of CREA. Used under license.