

\$375,000 - 10403 92 Street, La Crete

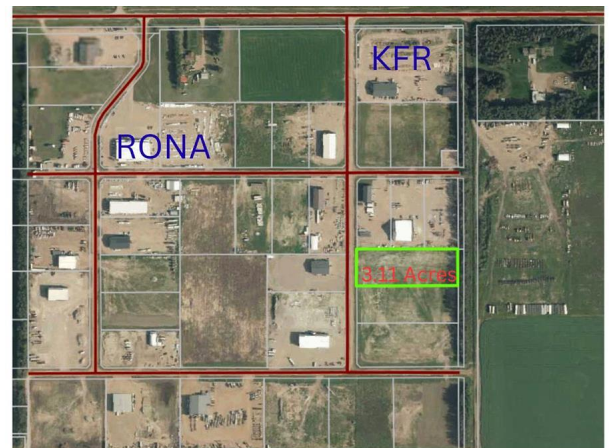
MLS® #A2256025

\$375,000

0 Bedroom, 0.00 Bathroom,
Land on 3.11 Acres

NONE, La Crete, Alberta

Large 3.11 Acre industrial lot for sale at a prime location in La Crete! Located just south of the Kubota Farm and Ranch yard. Lot has all town services, and good elevation, making it a great location to start or expand your business operations. Reach out today for more info!



Essential Information

MLS® #	A2256025
Price	\$375,000
Bathrooms	0.00
Acres	3.11
Type	Land
Sub-Type	Industrial Land
Status	Active

Community Information

Address	10403 92 Street
Subdivision	NONE
City	La Crete
County	Mackenzie County
Province	Alberta
Postal Code	T0h2H0

Additional Information

Date Listed	September 9th, 2025
Days on Market	7
Zoning	LC-LI

Listing Details

Listing Office RE/MAX Grande Prairie

Data is supplied by Pillar 9â,,ç MLSÂ® System. Pillar 9â,,ç is the owner of the copyright in its MLSÂ® System. Data is deemed reliable but is not guaranteed accurate by Pillar 9â,,ç. The trademarks MLSÂ®, Multiple Listing ServiceÂ® and the associated logos are owned by The Canadian Real Estate Association (CREA) and identify the quality of services provided by real estate professionals who are members of CREA. Used under license.