

# \$1,650 - 1, 1042 Alice Birch Point N, Lethbridge

MLS® #A2242340

**\$1,650**

0 Bedroom, 0.00 Bathroom, 1,112 sqft

Rental on 0.00 Acres

Legacy Ridge / Hardieville, Lethbridge, Alberta

2 Bed/ 2 Bathroom Main Level Bungalow in Legacy Ridge! Laminate Flooring, quartz counter tops in the kitchen and stainless steel appliances. Both suits have separate laundry. Basement suite has access to garage only. Privacy for both tenants. Available AUGUST 16th, 2025. Rent: \$1650.00 + 50% Utilities. \*\*Pets are subject to owner approval, \$50.00 a month fee per pet. Application required prior to viewing. Security Deposit: \$1650.00.

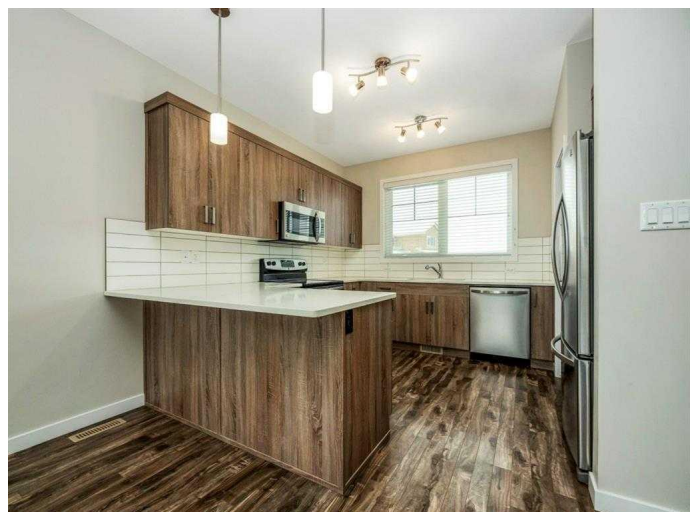
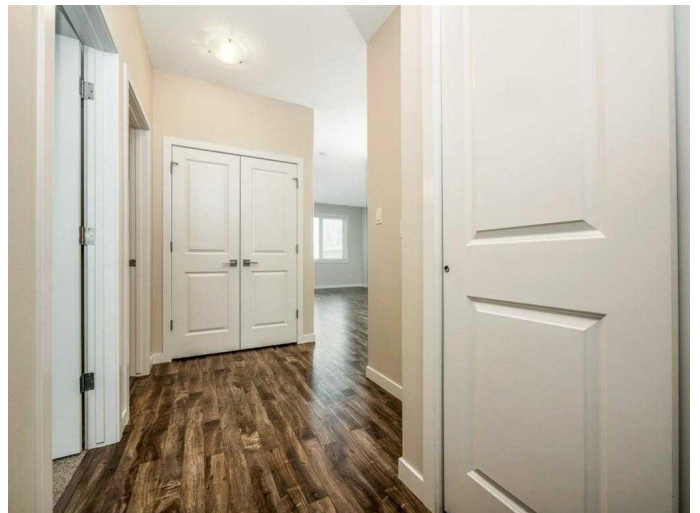
## Essential Information

MLS® #	A2242340
Price	\$1,650
Bathrooms	0.00
Square Footage	1,112
Acres	0.00
Type	Rental
Status	Active

## Community Information

Address	1, 1042 Alice Birch Point N
Subdivision	Legacy Ridge / Hardieville
City	Lethbridge
County	Lethbridge
Province	Alberta
Postal Code	T1H 7B9

## Amenities



Parking                      None, On Street

### **Interior**

Appliances                      Dishwasher, Microwave, Oven, Refrigerator, Stove(s), Washer/Dryer, Window Coverings

### **Exterior**

Roof                              Asphalt Shingle

### **Additional Information**

Date Listed                      July 22nd, 2025

Days on Market                5

### **Listing Details**

Listing Office                      Grassroots Realty Group

Data is supplied by Pillar 9â„¢ MLS® System. Pillar 9â„¢ is the owner of the copyright in its MLS® System. Data is deemed reliable but is not guaranteed accurate by Pillar 9â„¢. The trademarks MLS®, Multiple Listing Service® and the associated logos are owned by The Canadian Real Estate Association (CREA) and identify the quality of services provided by real estate professionals who are members of CREA. Used under license.