

# \$565,000 - 293068 Deer Valley Lane Lane, Rural Kneehill County

---

MLS® #A2239774

**\$565,000**

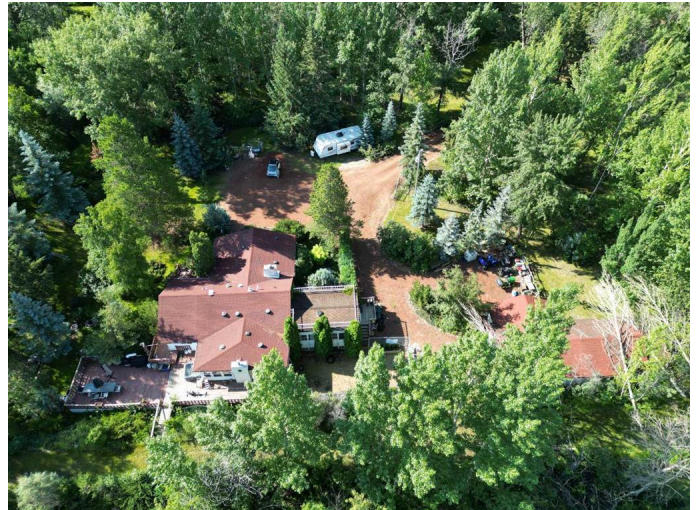
1 Bedroom, 2.00 Bathroom, 1,894 sqft  
Residential on 11.79 Acres

NONE, Rural Kneehill County, Alberta

Welcome to your private paradise along the scenic Red Deer River and Kneehill Creek. This 1,894 sq ft home offers a rare opportunity to own nearly 12 acres of beautifully treed, secluded land—complete with a double detached garage which includes spacious working area, ideal for hobbies or storage. Surrounded by nature and nestled at the end of a private drive, this property is perfect for those seeking peace, privacy, and panoramic views. Explore a network of winding trails through mature trees, enjoy summer nights around the firepit by the river’s edge, or unwind on the expansive deck overlooking the breathtaking natural landscape. Inside, the home offers comfortable living with room to grow, while outside, the lush green space and tranquil surroundings invite endless outdoor adventures. The previous owner has built a berm to provide added peace of mind and protection. Whether you're looking for a full-time residence, recreational escape, or a scenic spot to settle down near Drumheller, this one-of-a-kind property is a must-see. Don’t miss your chance to own this piece of riverfront paradise. Schedule your private tour today!

Built in 1940

## Essential Information



MLS® #	A2239774
Price	\$565,000
Bedrooms	1
Bathrooms	2.00
Full Baths	2
Square Footage	1,894
Acres	11.79
Year Built	1940
Type	Residential
Sub-Type	Detached
Style	Acreage with Residence, Bungalow
Status	Active

### Community Information

Address	293068 Deer Valley Lane Lane
Subdivision	NONE
City	Rural Kneehill County
County	Kneehill County
Province	Alberta
Postal Code	T0J 0Y0

### Amenities

Parking	Double Garage Detached, Driveway, Garage Door Opener, Heated Garage
# of Garages	2
Waterfront	River Access, River Front

### Interior

Interior Features	French Door, Solar Tube(s)
Appliances	Dishwasher, Dryer, Oven, Refrigerator, Washer
Heating	Forced Air, Natural Gas
Cooling	None
Fireplace	Yes
# of Fireplaces	2
Fireplaces	Electric, Gas
Has Basement	Yes
Basement	Partial, Partially Finished

### Exterior

Exterior Features	Dog Run, Fire Pit, Private Entrance, Private Yard, Awning(s)
Lot Description	Many Trees, Private, Creek/River/Stream/Pond, Native Plants, Secluded
Roof	Asphalt Shingle
Construction	Mixed, Stucco, Wood Frame
Foundation	Other

### **Additional Information**

Date Listed	July 14th, 2025
Days on Market	7
Zoning	A

### **Listing Details**

Listing Office	Royal LePage Wildrose Real Estate-Drumheller
----------------	--

Data is supplied by Pillar 9â„¢ MLS® System. Pillar 9â„¢ is the owner of the copyright in its MLS® System. Data is deemed reliable but is not guaranteed accurate by Pillar 9â„¢. The trademarks MLS®, Multiple Listing Service® and the associated logos are owned by The Canadian Real Estate Association (CREA) and identify the quality of services provided by real estate professionals who are members of CREA. Used under license.