

\$1,150,000 - 37, 704010 Range Road 64, Rural Grande Prairie No. 1, County of

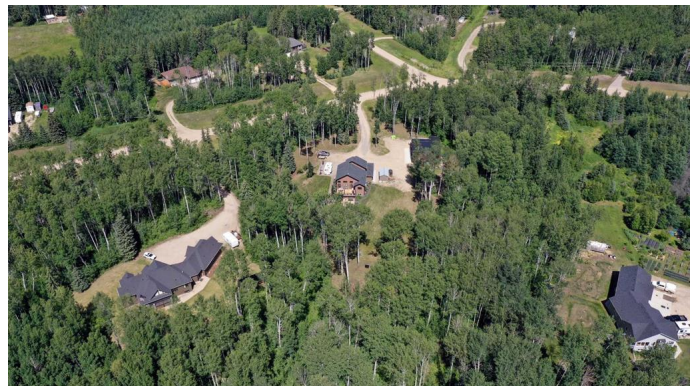
MLS® #A2236632

\$1,150,000

4 Bedroom, 3.00 Bathroom, 1,868 sqft
Residential on 2.79 Acres

Mystic Ridge, Rural Grande Prairie No. 1,
County of, Alberta

Just minutes from Grande Prairie in desirable Mystic Ridge, this fully upgraded 4-bedroom, 3-bathroom home sits on a high lot. The spacious triple car garage features in-floor heat, and a stunning 2019 built 42x40 shop with a 24x12 addition that offers radiant heat, epoxied floors, and transparent overhead doors that fill the space with daylight. Inside, you'll find granite countertops, a gas stove, stainless steel appliances, and three natural gas fireplaces—one each in the main living room, basement family room, and the primary bedroom. Soaring 16-foot ceilings and expansive windows create a bright and open main living space, complete with built-in speakers throughout. There is a large, open air office area leading into the luxurious primary bedroom, that includes a gas fireplace, 4-piece ensuite with a steam shower, and walk-in closet. The fully developed basement features a wet bar with fridge, additional bedroom and bathroom, and in-floor heating. Enjoy seamless smart home living with a Control4 system managing your entertainment, and A/C to control the temperatures. Step outside to a newly built deck, gas lines to both BBQ and firepit (under the gazebo), outdoor speakers, a natural firepit area, woodshed, and a beautifully landscaped garden oasis basking in sun all day long. A newly installed 3-stage septic system completes this



incredible package. This home is absolutely gorgeous and sits on a beautiful 2.79 acre lot. There is also a large shed, RV dump and hookups. It truly has it all, book your showing today!

Built in 2013

Essential Information

MLS® #	A2236632
Price	\$1,150,000
Bedrooms	4
Bathrooms	3.00
Full Baths	3
Square Footage	1,868
Acres	2.79
Year Built	2013
Type	Residential
Sub-Type	Detached
Style	Acreage with Residence, Modified Bi-Level
Status	Active

Community Information

Address	37, 704010 Range Road 64
Subdivision	Mystic Ridge
City	Rural Grande Prairie No. 1, County of
County	Grande Prairie No. 1, County of
Province	Alberta
Postal Code	T8W 5C5

Amenities

Parking Spaces	20
Parking	RV Access/Parking, Triple Garage Attached, RV Garage
# of Garages	8

Interior

Interior Features	Bar, Granite Counters, Kitchen Island, No Smoking Home, Open Floorplan, Walk-In Closet(s), Wired for Sound, Wired for Data
Appliances	Dishwasher, Gas Stove, Refrigerator, Washer/Dryer, Bar Fridge

Heating	Forced Air, Natural Gas
Cooling	Central Air
Fireplace	Yes
# of Fireplaces	3
Fireplaces	Gas
Has Basement	Yes
Basement	Finished, Full

Exterior

Exterior Features	Courtyard, Garden, Lighting, Private Entrance, Private Yard, Fire Pit
Lot Description	Front Yard, Garden, Landscaped, Lawn, No Neighbours Behind, Pie Shaped Lot, Private, Secluded, Treed, Many Trees, Wooded, Yard Drainage
Roof	Asphalt Shingle
Construction	Concrete
Foundation	Poured Concrete

Additional Information

Date Listed	July 3rd, 2025
Days on Market	4
Zoning	CR-2

Listing Details

Listing Office	Grassroots Realty Group Ltd.
----------------	------------------------------

Data is supplied by Pillar 9â„¢ MLSÂ® System. Pillar 9â„¢ is the owner of the copyright in its MLSÂ® System. Data is deemed reliable but is not guaranteed accurate by Pillar 9â„¢. The trademarks MLSÂ®, Multiple Listing ServiceÂ® and the associated logos are owned by The Canadian Real Estate Association (CREA) and identify the quality of services provided by real estate professionals who are members of CREA. Used under license.