

\$125,000 - 36 Aspen Rise, Parkland Beach

MLS® #A2236004

\$125,000

0 Bedroom, 0.00 Bathroom,
Land on 0.46 Acres

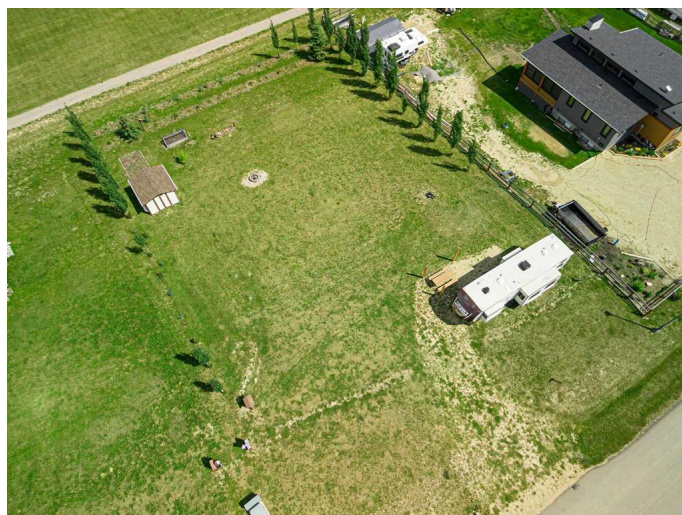
NONE, Parkland Beach, Alberta

Build your dream home or vacation getaway at Parkland Beach! This spacious lot offers the flexibility to develop a permanent residence, seasonal retreat, or park up to three RVs or developed pads. With a well drilled in 2022, holding tank, and electricity already on site, you're one step closer to enjoying lake life. Gas is to the property line.

This vibrant community offers a wide range of recreational activities including boating, fishing, water sports, disc golf, ice fishing, skating, beach days, playground fun, baseball, and trails. A golf course is nearby, and the area allows for Bed & Breakfasts, secondary suites, and home-based businesses, making this property as versatile as it is inviting. A 2014, 38-foot fifth wheel is currently on site and available for purchase (not included in the list price). It features three slide-outs, four bunk beds, a primary bedroom with washer/dryer hookups, and has only ever been parked on this lotâ€”making it a great turnkey option for immediate use.

Essential Information

MLS® #	A2236004
Price	\$125,000
Bathrooms	0.00
Acres	0.46
Type	Land



Sub-Type	Recreational
Status	Active

Community Information

Address	36 Aspen Rise
Subdivision	NONE
City	Parkland Beach
County	Ponoka County
Province	Alberta
Postal Code	T0C2J0

Amenities

Utilities	Electricity Available, Garbage Collection, High Speed Internet Available, Natural Gas at Lot Line, Phone Available
Waterfront	Lake, Lake Privileges

Exterior

Exterior Features	Fire Pit, Garden, Storage, RV Hookup
Lot Description	Near Golf Course, Lake

Additional Information

Date Listed	July 3rd, 2025
Days on Market	2
Zoning	Residential/Recreational

Listing Details

Listing Office	Royal LePage Network Realty Corp.
----------------	-----------------------------------

Data is supplied by Pillar 9â„¢ MLS® System. Pillar 9â„¢ is the owner of the copyright in its MLS® System. Data is deemed reliable but is not guaranteed accurate by Pillar 9â„¢. The trademarks MLS®, Multiple Listing Service® and the associated logos are owned by The Canadian Real Estate Association (CREA) and identify the quality of services provided by real estate professionals who are members of CREA. Used under license.