

# \$648,900 - 412 Highland Close, Strathmore

MLS® #A2231948

## \$648,900

4 Bedroom, 3.00 Bathroom, 1,300 sqft

Residential on 0.13 Acres

Hillview Estates, Strathmore, Alberta

Located in the quiet and desirable Hillview Estates, this well-maintained 4-bedroom, 3-bathroom home offers comfort, style, and functionality. Features include a spacious open-concept layout, quartz countertops, heated double attached garage and a walk-out basement.

Recent updates (all within the past year) include A/C, water heater, water softener, deck with cedar pergola—perfect for outdoor entertaining. Enjoy added luxury with a private 4 person wet / dry sauna.

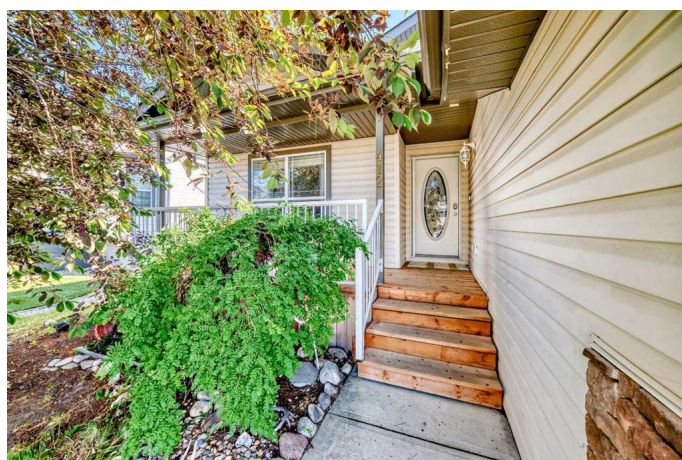
The family-friendly neighborhood is close to the Strathmore Golf Club, baseball diamonds, soccer fields, parks, playgrounds, a hockey arena, skateboard park, and other recreational amenities.

Donâ€™t miss this opportunity—book your showing today!

Built in 2005

## Essential Information

MLS® #	A2231948
Price	\$648,900
Bedrooms	4
Bathrooms	3.00
Full Baths	3
Square Footage	1,300
Acres	0.13
Year Built	2005



Type	Residential
Sub-Type	Detached
Style	Bungalow
Status	Active

### Community Information

Address	412 Highland Close
Subdivision	Hillview Estates
City	Strathmore
County	Wheatland County
Province	Alberta
Postal Code	T1P1V4

### Amenities

Parking Spaces	4
Parking	Double Garage Attached
# of Garages	2

### Interior

Interior Features	Open Floorplan, Pantry, Quartz Counters
Appliances	Dishwasher, Dryer, Electric Range, Refrigerator, Washer
Heating	Forced Air
Cooling	Central Air
Has Basement	Yes
Basement	Finished, Full, Walk-Out

### Exterior

Exterior Features	Other
Lot Description	Back Yard, Front Yard, Landscaped, Rectangular Lot
Roof	Asphalt Shingle
Construction	Stone, Vinyl Siding
Foundation	Poured Concrete

### Additional Information

Date Listed	July 11th, 2025
Days on Market	4
Zoning	R1

### Listing Details

Listing Office

First Place Realty

Data is supplied by Pillar 9â„¢ MLSÂ® System. Pillar 9â„¢ is the owner of the copyright in its MLSÂ® System. Data is deemed reliable but is not guaranteed accurate by Pillar 9â„¢. The trademarks MLSÂ®, Multiple Listing ServiceÂ® and the associated logos are owned by The Canadian Real Estate Association (CREA) and identify the quality of services provided by real estate professionals who are members of CREA. Used under license.