

\$1,600 - Unit B, 603 10 St S, Lethbridge

MLS® #A2231217

\$1,600

0 Bedroom, 0.00 Bathroom, 890 sqft

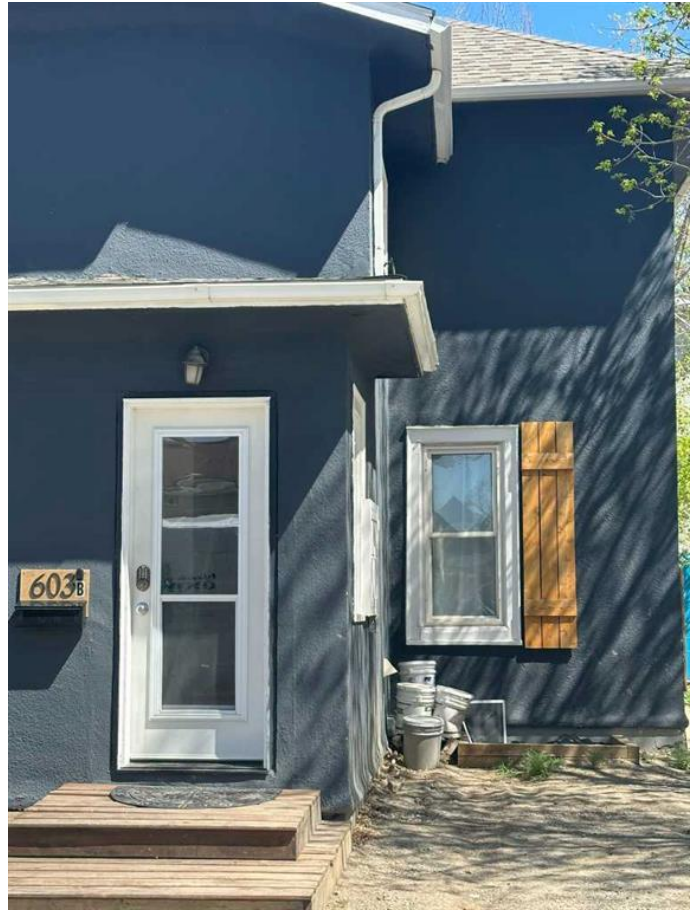
Rental on 0.00 Acres

London Road, Lethbridge, Alberta

Renovated 2 Bedroom Upper-Level Unit â€“
Southside Location + Utilities Included!

Recently renovated and move-in ready, this bright and clean 2 bedroom, 1 bathroom upper-level unit is located in a convenient Southside location, just a short walk to downtown, shopping, transit, and more.

Enjoy the comfort of in-suite laundry, separate parking, and utilities included (Wi-Fi and cable not included). Perfect for professionals or anyone looking for a stylish, updated space in a central area.



Rent: \$1600/month

Damage deposit: \$1600

Available July 1

Southside â€“ walking distance to downtown

In-suite laundry

Separate parking

Recently renovated

Utilities included (excludes Wi-Fi & cable)

Rental application & background check
required

No pets allowed

Contact Jess Mason to schedule a viewing

403-360-0514

Essential Information

MLS® #	A2231217
Price	\$1,600
Bathrooms	0.00
Square Footage	890
Acres	0.00
Type	Rental
Status	Active

Community Information

Address	Unit B, 603 10 St S
Subdivision	London Road
City	Lethbridge
County	Lethbridge
Province	Alberta
Postal Code	T1J 2M9

Amenities

Parking	Off Street, Parking Pad
---------	-------------------------

Interior

Appliances	Central Air Conditioner, Refri
------------	--------------------------------

Exterior

Roof	Asphalt Shingle
------	-----------------

Additional Information

Date Listed	June 14th, 2025
Days on Market	1

Listing Details

Listing Office	RE/MAX REAL ESTATE - LETH
----------------	---------------------------

Data is supplied by Pillar 9â„¢ MLSÂ® System. Pillar 9â„¢ is the owner of the copyright in its MLSÂ® System. Data is deemed reliable but is not guaranteed accurate by Pillar 9â„¢. The trademarks MLSÂ®, Multiple Listing ServiceÂ® and the associated logos are owned by The Canadian Real Estate Association (CREA) and identify the quality of services provided by real estate professionals who are members of CREA. Used under license.

