

# \$44,000 - 205, 15538 Old Trail, Lac La Biche

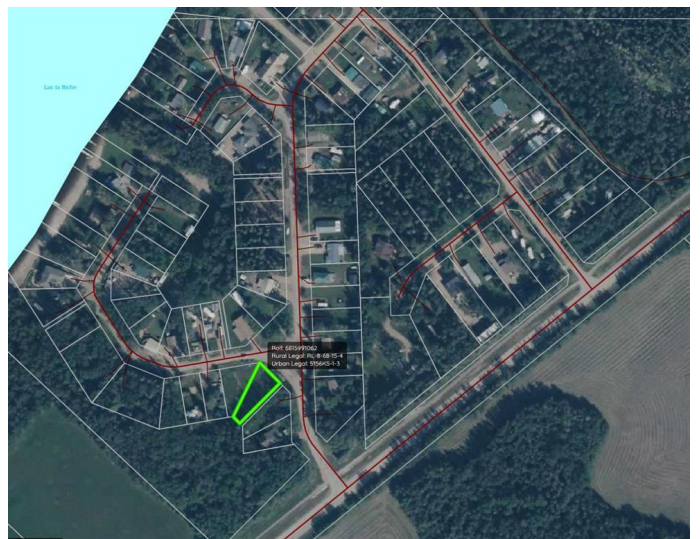
MLS® #A2229335

**\$44,000**

0 Bedroom, 0.00 Bathroom,  
Land on 0.15 Acres

NONE, Lac La Biche, Alberta

\*\*\*Serious Seller â€œ Open to Reasonable Offers\*\*\*Weekend-Ready at Bayview Beach â€œ Your Lakeside Escape Awaits. Tucked into the peaceful Bayview Beach subdivision on beautiful Lac La Biche Lake, this charming recreational lot is your chance to unwind, recharge, and soak up lake lifeâ€”all just steps from the water. Set among mature trees, this private, well-treed lot offers the perfect blend of shade and seclusion. Whether you want to park your RV for weekend getaways or start planning your dream cabin, this spot gives you the flexibility to do both. Enjoy easy access to the lake via the nearby municipal reserve, where youâ€™ll find a sandy beach and a public boat launch just a short stroll awayâ€”perfect for fishing, watersports, or quiet morning paddles. Bayview Beach is a welcoming mix of seasonal and year-round residents, and with municipal water and sewer now available in the subdivision, future development is easier than ever. Just two minutes from the hamlet of Plamondon, youâ€™re never far from groceries, fuel, and local amenitiesâ€”convenience and tranquility all in one. Whether youâ€™re looking for a peaceful retreat or a future full-time home base near the lake, this hidden gem offers a rare chance to get close to the water without the premium price of true lakefront. Start making memories at Bayview Beachâ€”where lake days are just around the corner!



## Essential Information

MLS® #	A2229335
Price	\$44,000
Bathrooms	0.00
Acres	0.15
Type	Land
Sub-Type	Residential Land
Status	Active

## Community Information

Address	205, 15538 Old Trail
Subdivision	NONE
City	Lac La Biche
County	Lac La Biche County
Province	Alberta
Postal Code	T0A2C0

## Amenities

Waterfront	Lake, Lake Front
------------	------------------

## Additional Information

Date Listed	June 13th, 2025
Days on Market	53
Zoning	CR

## Listing Details

Listing Office	eXp REALTY
----------------	------------

Data is supplied by Pillar 9â„¢ MLSÂ® System. Pillar 9â„¢ is the owner of the copyright in its MLSÂ® System. Data is deemed reliable but is not guaranteed accurate by Pillar 9â„¢. The trademarks MLSÂ®, Multiple Listing ServiceÂ® and the associated logos are owned by The Canadian Real Estate Association (CREA) and identify the quality of services provided by real estate professionals who are members of CREA. Used under license.