

# \$539,000 - 443 Railway Avenue, Cayley

MLS® #A2228639

**\$539,000**

3 Bedroom, 2.00 Bathroom, 1,454 sqft  
Residential on 0.14 Acres

NONE, Cayley, Alberta

Frontier Homes Inc., are welcoming you to the Hamlet of Cayley in the Foothills County, 13 km South of High River with AFFORDABLE Mid Grade NEW HOME. Featuring an inviting open floor plan, 3 bedrooms, 4 piece main bathroom, 3 piece ensuite, laundry closet, covered front porch foundations on screw piles with 4' insulated crawl space... (no basement), 60' x 100' lot with 24' x 26' detached garage. The Builder is offering great value presenting a blend of traditional and modern elements presenting the opportunity for the first time buyers or wanting to downsize in a great community for all ages. This Floor Plan is also offered on Lot 5.

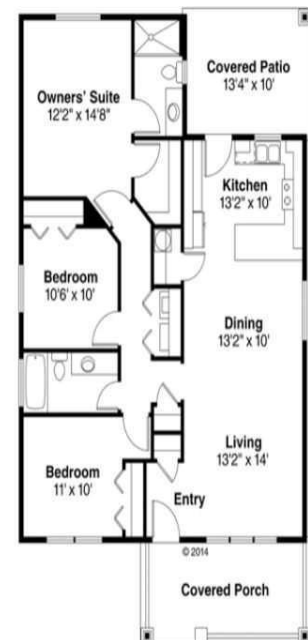
Built in 2025

## Essential Information

MLS® #	A2228639
Price	\$539,000
Bedrooms	3
Bathrooms	2.00
Full Baths	2
Square Footage	1,454
Acres	0.14
Year Built	2025
Type	Residential
Sub-Type	Detached
Style	Bungalow
Status	Active



Not Exactly as shown



## Community Information

Address	443 Railway Avenue
Subdivision	NONE
City	Cayley
County	Foothills County
Province	Alberta
Postal Code	T0L 0P0

## Amenities

Parking Spaces	2
Parking	Double Garage Detached, See Remarks
# of Garages	2

## Interior

Interior Features	See Remarks
Appliances	None
Heating	Forced Air, Natural Gas
Cooling	None
Basement	None

## Exterior

Exterior Features	Private Yard
Lot Description	Level
Roof	Asphalt Shingle
Construction	Vinyl Siding, Wood Frame
Foundation	Piling(s)

## Additional Information

Date Listed	June 6th, 2025
Days on Market	96
Zoning	r1

## Listing Details

Listing Office	Royal LePage Solutions
----------------	------------------------

Data is supplied by Pillar 9â„¢ MLSÂ® System. Pillar 9â„¢ is the owner of the copyright in its MLSÂ® System. Data is deemed reliable but is not guaranteed accurate by Pillar 9â„¢. The trademarks MLSÂ®, Multiple Listing ServiceÂ® and the associated logos are owned by The Canadian Real Estate Association (CREA) and identify the quality of services provided by real estate professionals who are members of CREA. Used under license.