

\$530,000 - 831034 Range Road 232, Rural Peace No. 135, M.D. of

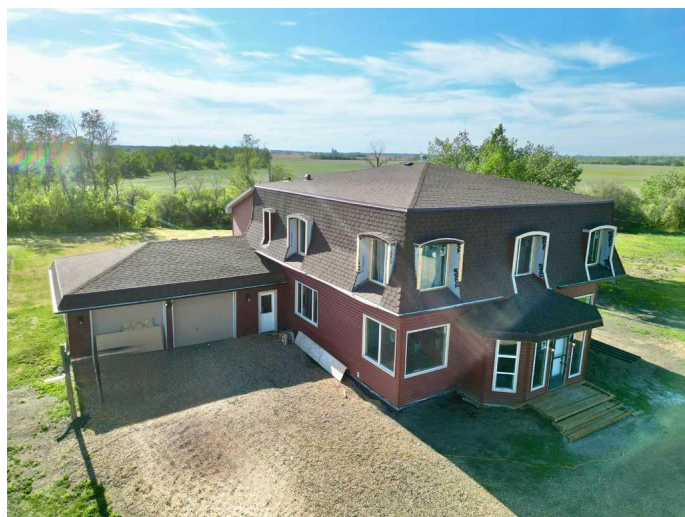
MLS® #A2226096

\$530,000

6 Bedroom, 3.00 Bathroom, 3,617 sqft
Residential on 3.71 Acres

NONE, Rural Peace No. 135, M.D. of, Alberta

Look at this gorgeous mid-century home that has just come onto the market. This home is currently being lovingly renovated and restored, offering a unique opportunity for those with an appreciation for historical charm and country-style living. Nestled on 3.7 acres just 4 km north of Grimshaw, approximately 80% of the restoration work on this home has already been completed. As you step inside through the generous entry, you'll immediately notice the inviting living room with its beautifully spaced windows, romantic archways, and grand staircase. The main floor boasts a stunning primary bedroom and ensuite, complete with corner windows designed to perfectly frame the surrounding landscape. The country kitchen is functional and warmly welcoming, allowing the true character of the house to shine. Adjacent to the kitchen, a thoughtfully designed back entry provides access to the laundry room, an oversized 4-piece bathroom, ample storage, and access to the mudroom and attached garage. A special feature of this home is the abundance of expansive windows in every room, which flood the interior with natural light and create a seamless connection with the outdoors. Beyond its simple yet elegant style, the house offers a generous layout with 6 bedrooms and 3 bathrooms. Upstairs, a grand landing area leads to a bright and sunny flex room surrounded by windows. You'll also find



a charming family room on this level, featuring sloped ceilings that perfectly compliment the home's mid-century appeal. A completely new basement has been expertly added, demonstrating careful planning and professional help. Crucially, all the essential fundamentals of this home have been addressed with new windows, shingles, siding, furnace, electrical, plumbing, spray foam insulation, kitchen, 2 bathrooms, 6 bedrooms and the back entry (excluding trim work). You have a wonderful choice with this property. You can roll up your sleeves and complete the remaining touches, adding your own personal character to the home, or the seller is willing to complete the project for you. Either way, the result will be an elegant family country home. The list price reflects a fully finished home. This could be your unique opportunity to own a truly beautiful country home.

Built in 1963

Essential Information

| | |
|----------------|----------------------------------|
| MLS® # | A2226096 |
| Price | \$530,000 |
| Bedrooms | 6 |
| Bathrooms | 3.00 |
| Full Baths | 3 |
| Square Footage | 3,617 |
| Acres | 3.71 |
| Year Built | 1963 |
| Type | Residential |
| Sub-Type | Detached |
| Style | 2 Storey, Acreage with Residence |
| Status | Active |

Community Information

| | |
|-------------|------------------------------|
| Address | 831034 Range Road 232 |
| Subdivision | NONE |
| City | Rural Peace No. 135, M.D. of |

| | |
|-------------|------------------------|
| County | Peace No. 135, M.D. of |
| Province | Alberta |
| Postal Code | T0H1W0 |

Amenities

| | |
|----------------|------------------------|
| Parking Spaces | 6 |
| Parking | Double Garage Attached |
| # of Garages | 2 |

Interior

| | |
|-------------------|--|
| Interior Features | Beamed Ceilings, Ceiling Fan, Full Bath, Full Kitchen, Full Tub, No Animal Home, No Pool, Recessed Lighting, Vaulted Ceiling |
| Appliances | Dishwasher, Electric Range, Microwave |
| Heating | Central, Forced Air |
| Cooling | None |
| Has Basement | Yes |
| Basement | Full, Unfinished |



Exterior

| | |
|-------------------|---|
| Exterior Features | Private Entrance, Private Yard |
| Lot Description | Back Yard, Creek/River/Stream/Pond, Front Yard, Lawn, Private, Subdivided |
| Roof | Asphalt |
| Construction | Vinyl Siding |
| Foundation | Poured Concrete |

Additional Information

| | |
|----------------|----------------|
| Date Listed | May 30th, 2025 |
| Days on Market | 22 |
| Zoning | AG |

Listing Details

| | |
|----------------|----------------------------|
| Listing Office | Royal LePage Valley Realty |
|----------------|----------------------------|

Data is supplied by Pillar 9â„¢ MLSÂ® System. Pillar 9â„¢ is the owner of the copyright in its MLSÂ® System. Data is deemed reliable but is not guaranteed accurate by Pillar 9â„¢. The trademarks MLSÂ®, Multiple Listing ServiceÂ® and the associated logos are owned by The Canadian Real Estate Association (CREA) and identify the quality of services provided by real estate professionals who are members of CREA. Used under license.