

\$220,000 - 6809 102 Street, Grande Prairie

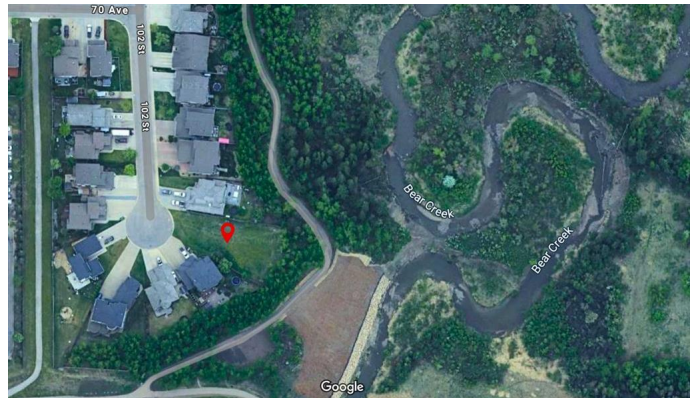
MLS® #A2225256

\$220,000

0 Bedroom, 0.00 Bathroom,
Land on 0.33 Acres

Mission Heights., Grande Prairie, Alberta

Build your dream home on one of the most sought-after streets in Grande Prairie. This exceptional residential lot, located at 6809 102 Street in the desirable Mission Heights neighbourhood, offers a rare opportunity to create a custom home in an already fully developed and established area. Backing directly onto the scenic Bear Creek and the Muskoseepi Trail system, this property provides a serene and private setting with mature trees at the rear, providing a beautiful canvas for your future build. With access to kilometres of walking and biking trails and the convenience of being just minutes from the Eastlink Centre, Starbucks, major restaurants, and essential services, all while being tucked away in a quiet, family-friendly community. This is a rare opportunity to build in an established neighbourhood. This location offers the perfect blend of natural beauty, location, and lifestyle. If you've been waiting for the ideal place to bring your vision to life, this is it. Grande Built Homes will even build it for you just the way you want, so let the planning begin!



Essential Information

MLS® #	A2225256
Price	\$220,000
Bathrooms	0.00
Acres	0.33

Type	Land
Sub-Type	Residential Land
Status	Active

Community Information

Address	6809 102 Street
Subdivision	Mission Heights.
City	Grande Prairie
County	Grande Prairie
Province	Alberta
Postal Code	T8W2Y4

Additional Information

Date Listed	May 27th, 2025
Days on Market	104
Zoning	RR

Listing Details

Listing Office	eXp Realty
----------------	------------

Data is supplied by Pillar 9â„¢ MLS® System. Pillar 9â„¢ is the owner of the copyright in its MLS® System. Data is deemed reliable but is not guaranteed accurate by Pillar 9â„¢. The trademarks MLS®, Multiple Listing Service® and the associated logos are owned by The Canadian Real Estate Association (CREA) and identify the quality of services provided by real estate professionals who are members of CREA. Used under license.