

\$415,000 - 6 Ladwig Close, Red Deer

MLS® #A2225134

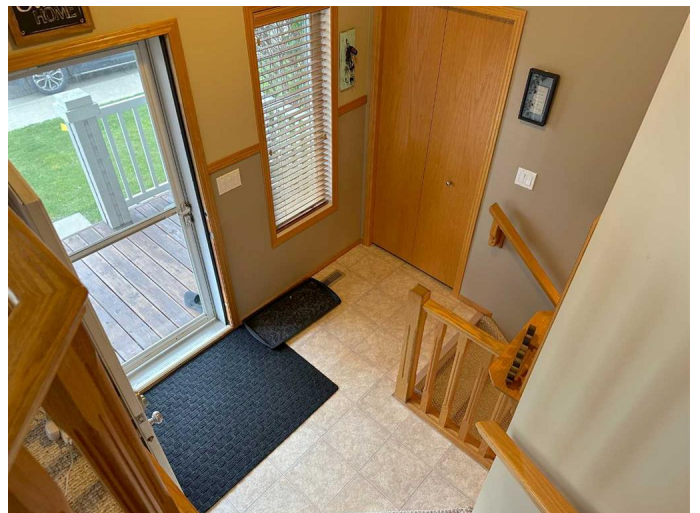
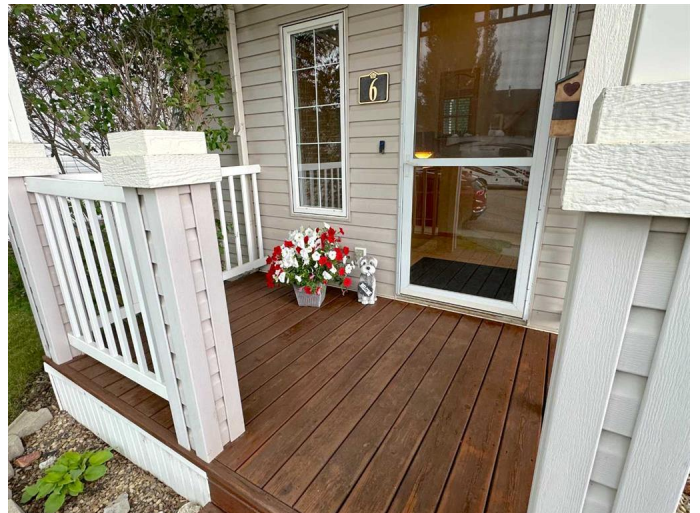
\$415,000

3 Bedroom, 2.00 Bathroom, 914 sqft

Residential on 0.13 Acres

Lonsdale, Red Deer, Alberta

Very well kept fully developed bi-level home is situated in a fantastic family-friendly neighborhood. Tucked away on a quiet street and just a short walk from several local schools and a nearby recreation facility, this home offers the perfect blend of comfort and convenience. Step inside to find soaring vaulted ceilings that add to the spacious feel of the main level. The bright, east-facing living room welcomes an abundance of natural light—an ideal way to start your day. The kitchen is both functional and inviting, featuring attractive oak cabinetry with display cabinets, a raised eating bar, a large pantry, and stylish decorative ledges. The adjoining dining area offers garden door access to the impressive 10x26 full-length back deck—perfect for hosting gatherings or enjoying your morning coffee outdoors. The main floor hosts two generously sized bedrooms, including a primary bedroom with double closets and a ceiling fan. The main bathroom features a one-piece tub surround and a large banjo-style countertop for added space. Head downstairs to the professionally finished basement, where you’ll find a spacious family room complete with a cozy gas fireplace. The L-shaped layout includes a beautifully lit bar area—ideal for entertaining guests. A third bedroom and a full bathroom round out the basement level, providing a comfortable and private space for guests or family members. The landscaped backyard is a peaceful retreat, surrounded by mature trees and



shrubs that offer privacy and charm. Underground sprinklers make yard maintenance a breeze, and the large covered storage area beneath the deck includes a gas line for your BBQ. A standout feature is the oversized 22x28 detached garageâ€”fully finished and insulated, with a gas line in place, it's perfect for projects, storage, or protecting vehicles during our cold winters. Thereâ€™s also a fully fenced parking pad with a large swing gate, offering room for extra vehicles or even a small RV. This property is truly move-in ready and perfectly tailored for family living. Donâ€™t miss the opportunity to make it yours!

Built in 1999

Essential Information

MLS® #	A2225134
Price	\$415,000
Bedrooms	3
Bathrooms	2.00
Full Baths	2
Square Footage	914
Acres	0.13
Year Built	1999
Type	Residential
Sub-Type	Detached
Style	Bi-Level
Status	Active

Community Information

Address	6 Ladwig Close
Subdivision	Lonsdale
City	Red Deer
County	Red Deer
Province	Alberta
Postal Code	T4R 2V6

Amenities

Parking Spaces	2
Parking	Double Garage Detached
# of Garages	2

Interior

Interior Features	Ceiling Fan(s), High Ceilings, No Smoking Home, Open Floorplan, Vinyl Windows, Closet Organizers, Laminate Counters, Vaulted Ceiling(s)
Appliances	Dishwasher, Microwave, Refrigerator, Stove(s), Washer/Dryer, Garage Control(s)
Heating	Forced Air
Cooling	None
Fireplace	Yes
# of Fireplaces	1
Fireplaces	Gas, Family Room
Has Basement	Yes
Basement	Finished, Full

Exterior

Exterior Features	Balcony
Lot Description	Back Yard, City Lot, Landscaped, Back Lane, Few Trees
Roof	Asphalt Shingle
Construction	Vinyl Siding, Wood Frame
Foundation	Poured Concrete

Additional Information

Date Listed	July 22nd, 2025
Days on Market	4
Zoning	R1

Listing Details

Listing Office	2 Percent Realty Advantage
----------------	----------------------------

Data is supplied by Pillar 9â„¢ MLS® System. Pillar 9â„¢ is the owner of the copyright in its MLS® System. Data is deemed reliable but is not guaranteed accurate by Pillar 9â„¢. The trademarks MLS®, Multiple Listing Service® and the associated logos are owned by The Canadian Real Estate Association (CREA) and identify the quality of services provided by real estate professionals who are members of CREA. Used under license.