

\$165,000 - 20, 5215 6 Avenue, Edson

MLS® #A2224229

\$165,000

3 Bedroom, 2.00 Bathroom, 1,031 sqft

Residential on 0.00 Acres

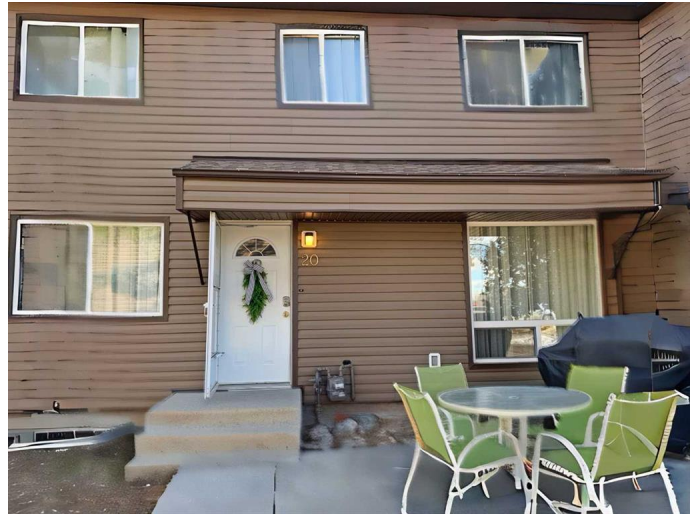
NONE, Edson, Alberta

Check out this bright, Low Maintenance Condo! It is located close to parks, schools and shopping. This condo encompasses 3 bedrooms, 1 and 1/2 bathrooms in Heatherwood Village. It has Laminate flooring throughout, with Tile in Bathroom's and Entrance. The main floor holds the kitchen, dining and living room with a 1/2 bath for guests. The second floor has 2 comfortable secondary bedrooms, a 4 piece bathroom and a bright good size primary bedroom. Downstairs holds the utility room, laundry room, and a partially finished space which would be fantastic as family room, home office, home gym or game room. Living here means you will not have to shovel snow or mow the lawn.

Built in 1977

Essential Information

MLS® #	A2224229
Price	\$165,000
Bedrooms	3
Bathrooms	2.00
Full Baths	1
Half Baths	1
Square Footage	1,031
Acres	0.00
Year Built	1977
Type	Residential



Sub-Type	Row/Townhouse
Style	2 Storey, Side by Side
Status	Active

Community Information

Address	20, 5215 6 Avenue
Subdivision	NONE
City	Edson
County	Yellowhead County
Province	Alberta
Postal Code	T7E 1K9

Amenities

Amenities	None
Parking Spaces	1
Parking	Off Street, Outside

Interior

Interior Features	Closet Organizers, No Smoking Home, Laminate Counters
Appliances	None, Other
Heating	Forced Air, Natural Gas
Cooling	None
# of Stories	2
Has Basement	Yes
Basement	Full, Partially Finished

Exterior

Exterior Features	None
Lot Description	Back Lane, Landscaped
Roof	Asphalt Shingle
Construction	Vinyl Siding
Foundation	Poured Concrete

Additional Information

Date Listed	May 30th, 2025
Days on Market	82
Zoning	R3

Listing Details

Listing Office

CENTURY 21 TWIN REALTY

Data is supplied by Pillar 9â„¢ MLSÂ® System. Pillar 9â„¢ is the owner of the copyright in its MLSÂ® System. Data is deemed reliable but is not guaranteed accurate by Pillar 9â„¢. The trademarks MLSÂ®, Multiple Listing ServiceÂ® and the associated logos are owned by The Canadian Real Estate Association (CREA) and identify the quality of services provided by real estate professionals who are members of CREA. Used under license.