

# \$849,000 - N 1/2-nw-20-27-5-w5th Beaupre Creek Road, Rural Rocky View County

---

MLS® #A2218061

**\$849,000**

0 Bedroom, 0.00 Bathroom,  
Land on 80.63 Acres

NONE, Rural Rocky View County, Alberta

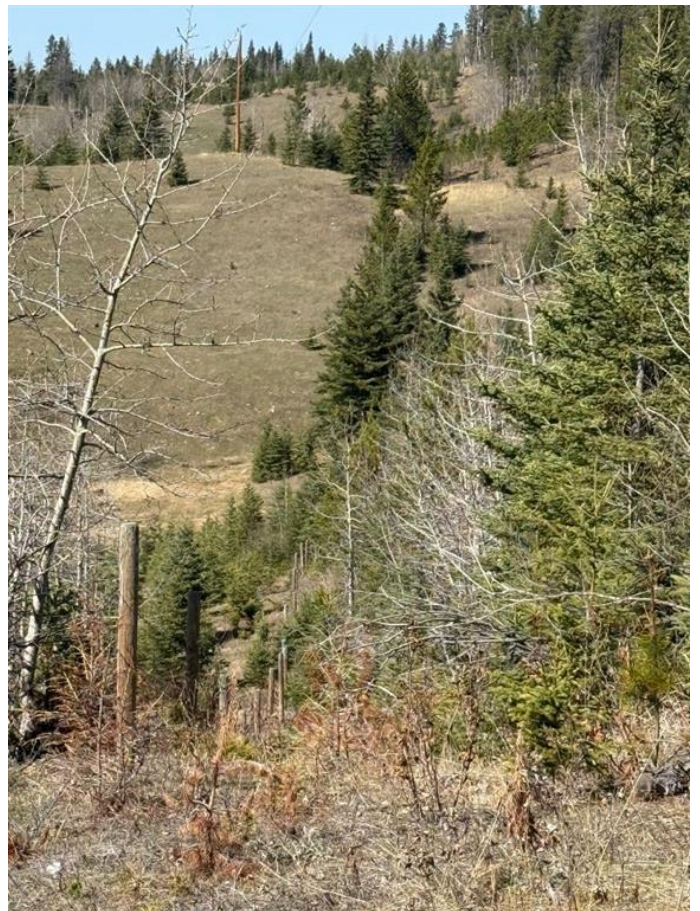
Very private 80.63 acre of land. Located 20 minutes NW of Cochrane off Beaupre Creek Road. This property has incredible mountain views to the west and valley views to the east. Good building sites with these views. Mixtures of trees and open areas making it easy to walk the property and take in the views. There are springs on the property as well and neighbours had no issues finding well water to the south. The pictures do not do this property justice for what you will see when you walk it. Call to book a showing today

## Essential Information

MLS® #	A2218061
Price	\$849,000
Bathrooms	0.00
Acres	80.63
Type	Land
Sub-Type	Residential Land
Status	Active

## Community Information

Address	N 1/2-nw-20-27-5-w5th Beaupre Creek Road
Subdivision	NONE
City	Rural Rocky View County
County	Rocky View County
Province	Alberta



Postal Code            T4C 2W1

## **Exterior**

Lot Description        No Neighbours Behind, Treed, Gentle Sloping

## **Additional Information**

Date Listed            May 6th, 2025

Days on Market        2

Zoning                  RF

## **Listing Details**

Listing Office           Royal LePage Benchmark

Data is supplied by Pillar 9â„¢ MLSÂ® System. Pillar 9â„¢ is the owner of the copyright in its MLSÂ® System. Data is deemed reliable but is not guaranteed accurate by Pillar 9â„¢. The trademarks MLSÂ®, Multiple Listing ServiceÂ® and the associated logos are owned by The Canadian Real Estate Association (CREA) and identify the quality of services provided by real estate professionals who are members of CREA. Used under license.