

\$559,500 - 11437 Pinnacle Drive, Grande Prairie

MLS® #A2217703

\$559,500

4 Bedroom, 3.00 Bathroom, 1,438 sqft
Residential on 0.14 Acres

Pinnacle Ridge., Grande Prairie, Alberta

Spacious & Versatile Modified Bi-Level
Backing a Park!

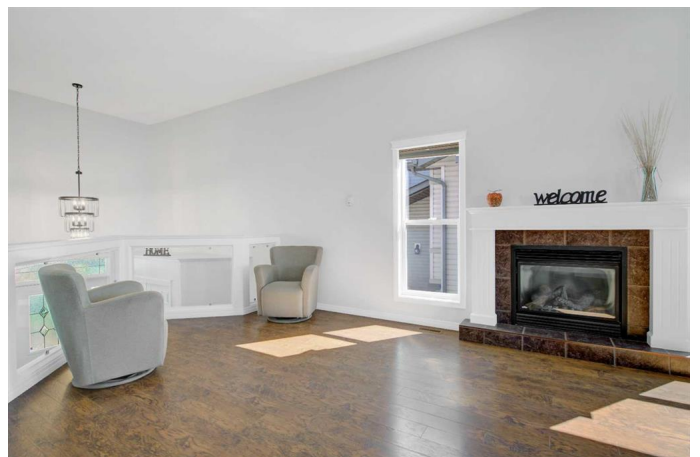
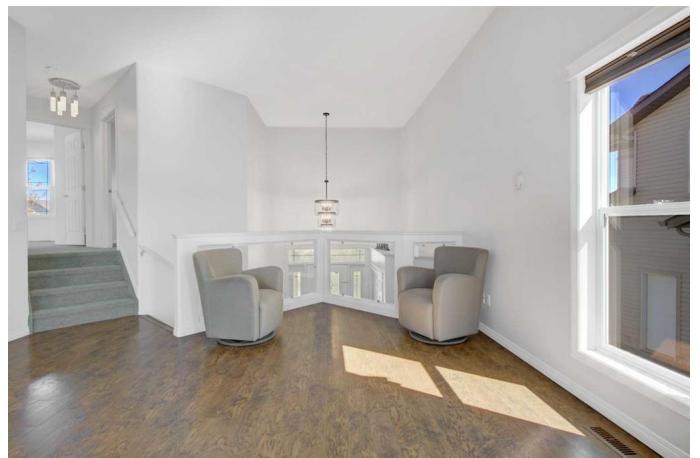
Welcome to this 1,438 sq ft modified bi-level featuring a thoughtfully designed layout perfect for families or multi-generational living. Located just 1 1/2 blocks away from a school, this home offers added convenience for families with children.

The freshly painted upper level boasts a private master retreat with a full ensuite, including his and her sinks, a jetted jacuzzi tub, separate shower, walk-in closet, and bonus closet space. Upstairs you'll find two additional bedrooms and another full bath.

The lower level impresses with tall ceilings, a second kitchen, another full bath, and walk-out access to the fenced backyard—ideal for in-laws, guests, or rental potential. Two secure entrances add privacy and flexibility. Please note this is an illegal suite.

The spacious double garage comes equipped with slat wall paneling for easy organization. Enjoy the peaceful backyard that backs onto a park and the winter outdoor rink (ODR) and boasts several mature trees including an apple tree! A large shed adds extra storage.

Bonus: All furniture, appliances, tool box, lawn



mower, Murphy bed, and more are includedâ€”just move in and enjoy!

Built in 2008

Essential Information

MLS® #	A2217703
Price	\$559,500
Bedrooms	4
Bathrooms	3.00
Full Baths	3
Square Footage	1,438
Acres	0.14
Year Built	2008
Type	Residential
Sub-Type	Detached
Style	Modified Bi-Level
Status	Active

Community Information

Address	11437 Pinnacle Drive
Subdivision	Pinnacle Ridge.
City	Grande Prairie
County	Grande Prairie
Province	Alberta
Postal Code	T8V 4B6

Amenities

Parking Spaces	4
Parking	Double Garage Attached
# of Garages	2

Interior

Interior Features	Closet Organizers, French Door, Kitchen Island, Pantry, Vaulted Ceiling(s), Walk-In Closet(s)
Appliances	Other
Heating	Forced Air, Natural Gas
Cooling	None
Fireplace	Yes

# of Fireplaces	1
Fireplaces	Gas, Living Room
Has Basement	Yes
Basement	Full, Suite, Walk-Out

Exterior

Exterior Features	Fire Pit, Garden
Lot Description	Backs on to Park/Green Space, Few Trees, Garden, Irregular Lot, Landscaped, Lawn, No Neighbours Behind
Roof	Asphalt Shingle
Construction	Stone, Vinyl Siding
Foundation	Poured Concrete

Additional Information

Date Listed	May 5th, 2025
Days on Market	2
Zoning	RS

Listing Details

Listing Office	Realty Executives North West
----------------	------------------------------

Data is supplied by Pillar 9â„¢ MLS® System. Pillar 9â„¢ is the owner of the copyright in its MLS® System. Data is deemed reliable but is not guaranteed accurate by Pillar 9â„¢. The trademarks MLS®, Multiple Listing Service® and the associated logos are owned by The Canadian Real Estate Association (CREA) and identify the quality of services provided by real estate professionals who are members of CREA. Used under license.