

\$420,000 - 165 Mt Douglas Manor Se, Calgary

MLS® #A2217458

\$420,000

3 Bedroom, 2.00 Bathroom, 1,326 sqft

Residential on 0.04 Acres

McKenzie Lake, Calgary, Alberta

Rare 3-bedroom, 1.5-bath townhome just steps from Mountain Park Middle School! Features luxury vinyl plank flooring, newer appliances, cozy fireplace, and a newer furnace. Enjoy a new roof and plenty of storage in the full basement. Conveniently located near parks, walking paths, and transit. Well maintained. Move-in condition!

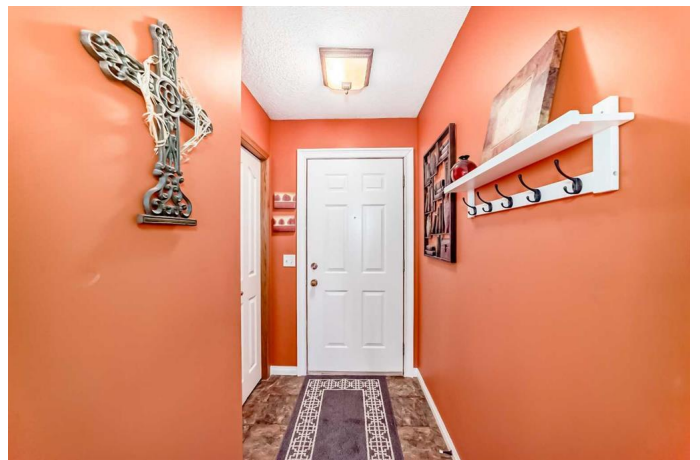
Built in 1997

Essential Information

MLS® #	A2217458
Price	\$420,000
Bedrooms	3
Bathrooms	2.00
Full Baths	1
Half Baths	1
Square Footage	1,326
Acres	0.04
Year Built	1997
Type	Residential
Sub-Type	Row/Townhouse
Style	2 Storey
Status	Active

Community Information

Address	165 Mt Douglas Manor Se
Subdivision	McKenzie Lake
City	Calgary



County	Calgary
Province	Alberta
Postal Code	T2Z 3C8

Amenities

Amenities	None
Parking Spaces	2
Parking	Single Garage Attached
# of Garages	1

Interior

Interior Features	Breakfast Bar, Kitchen Island
Appliances	Dishwasher, Electric Stove, Garage Control(s), Microwave, Range Hood, Refrigerator, Washer/Dryer, Window Coverings
Heating	Floor Furnace, Natural Gas
Cooling	None
Fireplace	Yes
# of Fireplaces	1
Fireplaces	Family Room, Gas
Has Basement	Yes
Basement	Full, Unfinished

Exterior

Exterior Features	Other
Lot Description	Back Yard
Roof	Asphalt Shingle
Construction	Wood Frame
Foundation	Poured Concrete

Additional Information

Date Listed	May 3rd, 2025
Days on Market	2
Zoning	M-CG

Listing Details

Listing Office	RE/MAX Realty Professionals
----------------	-----------------------------

Data is supplied by Pillar 9â„¢ MLSÂ® System. Pillar 9â„¢ is the owner of the copyright in its MLSÂ® System. Data is deemed reliable but is not guaranteed accurate by Pillar 9â„¢. The trademarks MLSÂ®, Multiple Listing ServiceÂ® and the associated logos are owned by The Canadian Real Estate Association (CREA) and identify the quality of services provided by real estate professionals who are members of CREA. Used under license.