

# \$540,000 - 4102 68 Street, Stettler

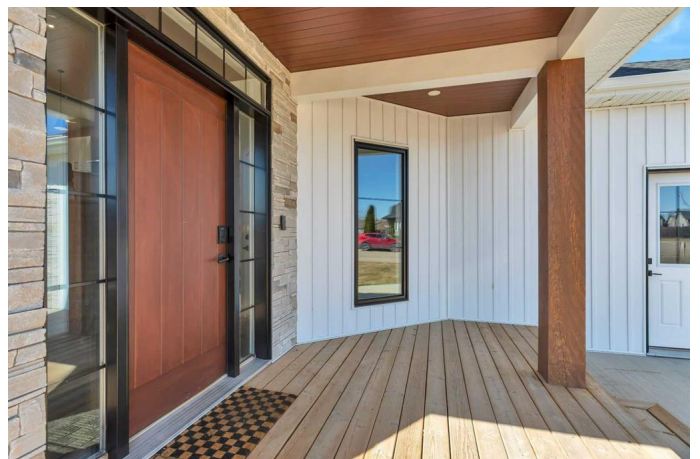
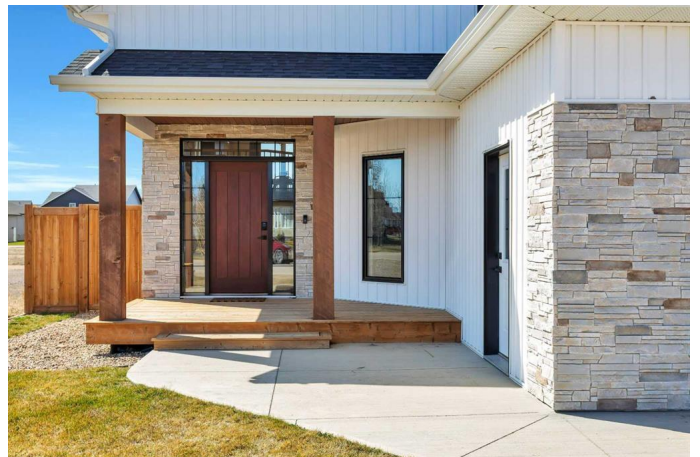
MLS® #A2216001

**\$540,000**

5 Bedroom, 3.00 Bathroom, 1,652 sqft  
Residential on 0.15 Acres

Meadowlands, Stettler, Alberta

Welcome to this exceptional home where modern aesthetic meets desirable farmhouse style, built in 2021 and in like-new condition. Offering over 1,600 sq ft of thoughtfully designed living space, this 5-bedroom, 3-bathroom home is located in one of Stettler's most desirable neighborhoods. Not only is it loaded with high-end custom features, this home blends tailored finishes, energy-efficient construction, and unbeatable proximity to community amenities offering a lifestyle that's hard to match. A sleek entryway with garage access, built-in bench, and hooks offers a functional welcome as you step into the space where everything comes together: the open-concept kitchen, dining, and living area. It features vaulted ceilings, quartz countertops, a large island, and a custom tile backsplash all complemented by stainless steel appliances and subtle wood accents. A built-in desk area with shiplap detail and wall sconces offers the perfect home organization or homework station, while a statement fireplace with black accents and a wood mantle anchors the cozy yet airy living room. The primary suite is ideally located on the main living level, creating a private retreat complete with vaulted ceilings, a beautifully designed ensuite, and a walk-in closet. Just a few steps up, the upper level has two additional bedrooms, a 4-piece main bathroom, and a convenient laundry room located near the kiddos' rooms. The fully developed lower level includes two more



bedrooms (one unfinished for your future home gym, office, or guest room), a third full bathroom, and a large, open secondary living space – all bathed in natural light thanks to oversized windows. Step outside and enjoy the benefits of this fully fenced yard, complete with a partially covered back deck just off the dining area – perfect for relaxing or entertaining. The double attached garage comes with rough-ins for heating, and the home is built for long-term performance with vertical board and batten siding, an ICF foundation, R40 insulated walls, and R52 ceiling insulation for year-round energy efficiency. Situated across the back lane from the Stettler Sports Field, this location is perfect for families with active kids. A short walk on paved walking paths takes you to West Stettler Park, the skate park and the Stettler Recreation Centre. From its custom craftsmanship and fresh, stylish finishes to its thoughtful layout and community-centered location, this home is in impeccable condition and offers a lifestyle that stands alone in today's market.

Built in 2021

### **Essential Information**

MLS® #	A2216001
Price	\$540,000
Bedrooms	5
Bathrooms	3.00
Full Baths	3
Square Footage	1,652
Acres	0.15
Year Built	2021
Type	Residential
Sub-Type	Detached
Style	Bi-Level
Status	Active

## Community Information

Address	4102 68 Street
Subdivision	Meadowlands
City	Stettler
County	Stettler No. 6, County of
Province	Alberta
Postal Code	T0C 2L1

## Amenities

Parking Spaces	6
Parking	Double Garage Attached
# of Garages	2

## Interior

Interior Features	Kitchen Island, No Smoking Home, Open Floorplan, Pantry, Quartz Counters, Vinyl Windows, Walk-In Closet(s), Vaulted Ceiling(s)
Appliances	Dishwasher, Range Hood, Refrigerator, Washer/Dryer, Stove(s)
Heating	Forced Air
Cooling	None
Fireplace	Yes
# of Fireplaces	1
Fireplaces	Electric
Has Basement	Yes
Basement	Finished, Full

## Exterior

Exterior Features	None
Lot Description	Low Maintenance Landscape, Back Lane
Roof	Asphalt Shingle
Construction	Vinyl Siding
Foundation	ICF Block

## Additional Information

Date Listed	April 29th, 2025
Days on Market	53
Zoning	R1

## Listing Details

Listing Office	CIR Realty
----------------	------------

Data is supplied by Pillar 9â„¢ MLS® System. Pillar 9â„¢ is the owner of the copyright in its MLS® System. Data is deemed reliable but is not guaranteed accurate by Pillar 9â„¢. The trademarks MLS®, Multiple Listing Service® and the associated logos are owned by The Canadian Real Estate Association (CREA) and identify the quality of services provided by real estate professionals who are members of CREA. Used under license.