

\$549,900 - 2300 Pioneer Drive Sw, Slave Lake

MLS® #A2215477

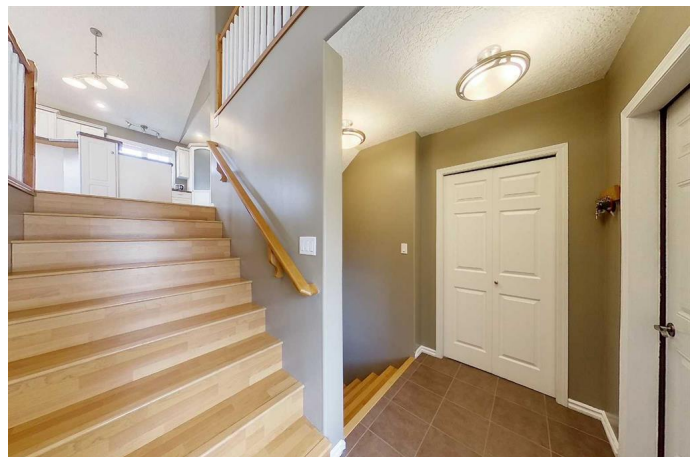
\$549,900

5 Bedroom, 3.00 Bathroom, 1,590 sqft

Residential on 0.56 Acres

NONE, Slave Lake, Alberta

Affordable Elevated Living In Prestigious Gloryland! This Stunning Executive Home Offers A Bright Walkout Basement And Exceptional Natural Light Throughout. Beautifully Built with 5-Bedrooms, 3-Bathrooms, This Home Showcases An Open-Concept Design With Vaulted Ceilings, A Spacious Living And Dining Area, And A Dream Kitchen With White Soft-Close Cabinetry, Crown Molding, A Large Island With Bar Seating, Pantry, Stainless Steel Appliances, And A Sleek Convection Stove With An Easy-Clean Built-In Fan. Garden Doors Open To A Massive Sundeck Complete With A Greenhouse—Perfect For Year-Round Growing. Enjoy Beautiful Views Of The Yard And Neighbourhood, With Convenient Gas Hookups Ready For Your BBQ Located On the Deck and Below. The Primary Suite Is A Private Retreat, Featuring A Cozy Gas Fireplace, Walk-In Closet, And A 4-Piece Ensuite With A Corner Jacuzzi Tub And Standup Shower. Two More Large Bedrooms And Another Full 4-Piece Bathroom Complete The Upstairs. The Bright Walkout Basement Offers Two Additional Bedrooms, A 3-Piece Bath, A Spacious Rec Room / Additional Living Room features A Wood Stove, And Direct Access To The Beautifully Landscaped, Partially Fenced Backyard Filled With Fruit Trees, Berries, Flower Beds, Garden, Firepit, Plus A Massive Shed! The Heated, Fully Finished Double Garage Is A True Bonus With Its Own Kitchen, Floor Sump, 220V Power,



And RV Hookupsâ€”Ideal For Hobbyists And Adventurers Alike. Located Steps Away From St. Francis Of Assisi High School, As Well As Shopping, This Prestigious Neighbourhood Offers Luxury, Peace, And Convenience. Updates Over The Years Include: New Roof (2016), Basement Renovation, Central Vacuum System With 5 Utility Sweeps, Garage Kitchen (2020), Deck Greenhouse (2021), And Fresh Paint Throughout. A Rare Opportunity In An Exclusive Communityâ€”Come Experience It For Yourself!

Built in 2005

Essential Information

MLS® #	A2215477
Price	\$549,900
Bedrooms	5
Bathrooms	3.00
Full Baths	3
Square Footage	1,590
Acres	0.56
Year Built	2005
Type	Residential
Sub-Type	Detached
Style	Modified Bi-Level
Status	Active

Community Information

Address	2300 Pioneer Drive Sw
Subdivision	NONE
City	Slave Lake
County	Lesser Slave River No. 124, M.D. of
Province	Alberta
Postal Code	T0G 2A4

Amenities

Parking Spaces	12
----------------	----

Parking	Double Garage Attached, Driveway, Garage Door Opener, Garage Faces Front, Heated Garage, Insulated, Off Street
---------	--

# of Garages	4
--------------	---

Interior

Interior Features	High Ceilings, Kitchen Island, No Animal Home, No Smoking Home, Open Floorplan, Vinyl Windows, Walk-In Closet(s), Built-in Features, Ceiling Fan(s), Crown Molding, Central Vacuum, Jetted Tub, Laminate Counters, Pantry, Separate Entrance, Storage, Sump Pump(s), Vaulted Ceiling(s)
-------------------	---

Appliances	Dishwasher, Refrigerator, Washer/Dryer, Stove(s), Window Coverings
------------	--

Heating	Forced Air, Natural Gas, Fireplace(s)
---------	---------------------------------------

Cooling	None
---------	------

Fireplace	Yes
-----------	-----

# of Fireplaces	2
-----------------	---

Fireplaces	Gas, Master Bedroom, Recreation Room, Wood Burning Stove
------------	--

Has Basement	Yes
--------------	-----

Basement	Finished, Full, Walk-Out
----------	--------------------------

Exterior

Exterior Features	Balcony, BBQ gas line, Private Yard, Fire Pit, Private Entrance, Rain Barrel/Cistern(s), Rain Gutters, RV Hookup, Storage
-------------------	---

Lot Description	Back Yard, Gentle Sloping, Landscaped, Rectangular Lot, Private
-----------------	---

Roof	Asphalt Shingle
------	-----------------

Construction	Stone, Vinyl Siding, Wood Frame
--------------	---------------------------------

Foundation	Poured Concrete
------------	-----------------

Additional Information

Date Listed	April 26th, 2025
-------------	------------------

Days on Market	120
----------------	-----

Zoning	R1C
--------	-----

Listing Details

Listing Office	eXp REALTY
----------------	------------

Data is supplied by Pillar 9â„¢ MLSÂ® System. Pillar 9â„¢ is the owner of the copyright in its MLSÂ® System. Data is deemed reliable but is not guaranteed accurate by Pillar 9â„¢. The trademarks MLSÂ®, Multiple Listing ServiceÂ® and the associated logos are owned by The Canadian Real Estate Association (CREA) and identify the quality of services provided by real estate professionals who are members of CREA. Used under license.