

\$591,000 - 29 Elkstone Way, Rural Rocky View County

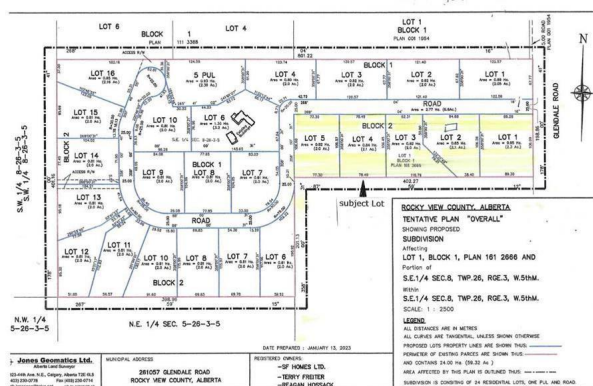
MLS® #A2215142

\$591,000

0 Bedroom, 0.00 Bathroom,
Land on 2.10 Acres

Glendale Meadows, Rural Rocky View County,
Alberta

Welcome to ELKSTONE ESTATES (lot # 4) in the rural community of Bearspaw. Enjoy the escape to country life with amenities just minutes away. This new development consists of 2 acre parcels nestled in a quiet paved road cul de sac with trees and underground services to property line (Power, Gas and Rocky View Water Co-op hook up) + paved approach. Enjoy the freedom to design your own home by your preferred builder. Common sense Architectural Guidelines apply to preserve value and consistency of the development. Schedule a viewing today and explore the possibilities of this remarkable lot in the new community of ELKSTONE ESTATES in Bearspaw first hand!! Please Note - great opportunity for Builders with 4 lots available in sought after country setting.



Essential Information

MLS® #	A2215142
Price	\$591,000
Bathrooms	0.00
Acres	2.10
Type	Land
Sub-Type	Residential Land
Status	Active

Community Information

Address	29 Elkstone Way
---------	-----------------

Subdivision	Glendale Meadows
City	Rural Rocky View County
County	Rocky View County
Province	Alberta
Postal Code	T4C 2Y8

Amenities

Utilities	Electricity at Lot Line, Water At Lot Line, Natural Gas at Lot Line
-----------	---

Additional Information

Date Listed	April 26th, 2025
Days on Market	66
Zoning	R-CRD

Listing Details

Listing Office	RE/MAX House of Real Estate
----------------	-----------------------------

Data is supplied by Pillar 9â„¢ MLS® System. Pillar 9â„¢ is the owner of the copyright in its MLS® System. Data is deemed reliable but is not guaranteed accurate by Pillar 9â„¢. The trademarks MLS®, Multiple Listing Service® and the associated logos are owned by The Canadian Real Estate Association (CREA) and identify the quality of services provided by real estate professionals who are members of CREA. Used under license.