

\$239,000 - 3, 714040 71 Range Rd, Rural Grande Prairie No. 1, County of

MLS® #A2215056

\$239,000

0 Bedroom, 0.00 Bathroom,
Land on 5.75 Acres

NONE, Rural Grande Prairie No. 1, County of,
Alberta

VACANT LOT AND IMMEDIATE POSSESSION!!! This 5.75 acre lot is ready to build on and zoned CR 5 country residential. Enjoy the convenience of being just minutes from Grande Prairie, where youâ€™ll find a variety of amenities to suit your lifestyle. With flexible options for build-to-suit and carrying options available, your vision can become a reality. Donâ€™t miss out on this incredible opportunity to invest in a community. For more details and to explore your options, call Sean today! Your dream home is just a lot away!



Essential Information

MLS® #	A2215056
Price	\$239,000
Bathrooms	0.00
Acres	5.75
Type	Land
Sub-Type	Residential Land
Status	Active

Community Information

Address	3, 714040 71 Range Rd
Subdivision	NONE
City	Rural Grande Prairie No. 1, County of
County	Grande Prairie No. 1, County of

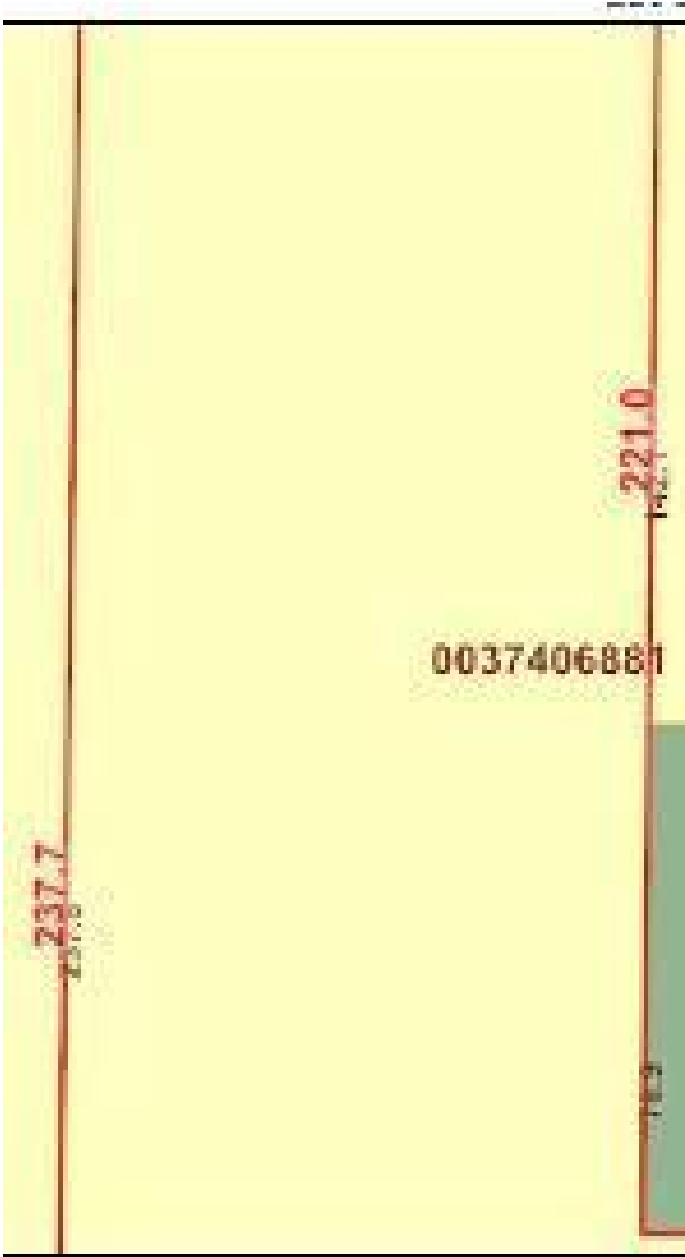
Province Alberta
Postal Code T8W 5J5

Additional Information

Date Listed April 25th, 2025
Days on Market 15
Zoning CR5

Listing Details

Listing Office RE/MAX Grande Prairie



Data is supplied by Pillar 9â„¢ MLSÂ® System. Pillar 9â„¢ is the owner of the copyright in its MLSÂ® System. Data is deemed reliable but is not guaranteed accurate by Pillar 9â„¢. The trademarks MLSÂ®, Multiple Listing ServiceÂ® and the associated logos are owned by The Canadian Real Estate Association (CREA) and identify the quality of services provided by real estate professionals who are members of CREA. Used under license.