

\$324,900 - 202, 730 2 Avenue Nw, Calgary

MLS® #A2213881

\$324,900

2 Bedroom, 1.00 Bathroom, 792 sqft
Residential on 0.00 Acres

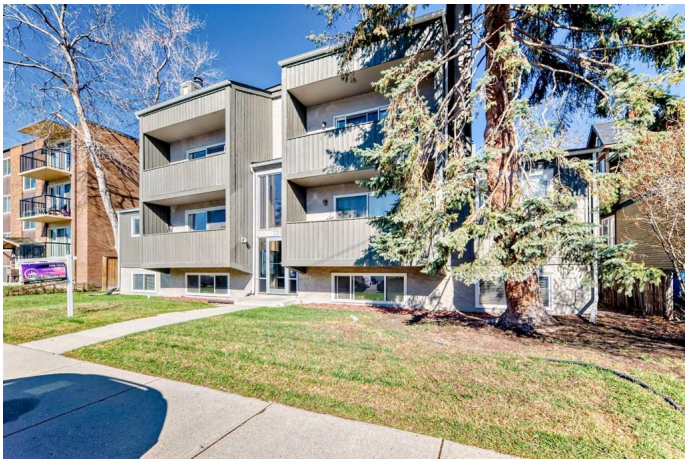
Sunnyside, Calgary, Alberta

Discover this fantastic condo in the heart of urban Sunnyside, just minutes from everything Calgary has to offer. This well-designed home features an open-concept kitchen with a pantry, seamlessly connecting to the bright living and dining area. Large patio doors open to a private balcony, filling the space with natural light. Offering two comfortable bedrooms, a full 4-piece bathroom, and convenient in-suite laundry, this condo has everything you need for easy city living. Just blocks from the Bow River, trendy local caf  s, restaurants, and transit, you  ll love the walkable lifestyle this location provides.

Built in 1975

Essential Information

MLS® #	A2213881
Price	\$324,900
Bedrooms	2
Bathrooms	1.00
Full Baths	1
Square Footage	792
Acres	0.00
Year Built	1975
Type	Residential
Sub-Type	Apartment
Style	Single Level Unit
Status	Active



Community Information

Address	202, 730 2 Avenue Nw
Subdivision	Sunnyside
City	Calgary
County	Calgary
Province	Alberta
Postal Code	T2N0E3

Amenities

Amenities	Other
Parking Spaces	1
Parking	Stall

Interior

Interior Features	Open Floorplan
Appliances	Dryer, Microwave, Refrigerator, Washer, Oven
Heating	Forced Air
Cooling	None
# of Stories	3

Exterior

Exterior Features	Balcony
Construction	Wood Frame, Wood Siding

Additional Information

Date Listed	April 25th, 2025
Days on Market	18
Zoning	M-CG

Listing Details

Listing Office	eXp Realty
----------------	------------

Data is supplied by Pillar 9â„¢ MLS® System. Pillar 9â„¢ is the owner of the copyright in its MLS® System. Data is deemed reliable but is not guaranteed accurate by Pillar 9â„¢. The trademarks MLS®, Multiple Listing Service® and the associated logos are owned by The Canadian Real Estate Association (CREA) and identify the quality of services provided by real estate professionals who are members of CREA. Used under license.