

\$650,000 - 43 Bridlecreek Terrace Sw, Calgary

MLS® #A2213729

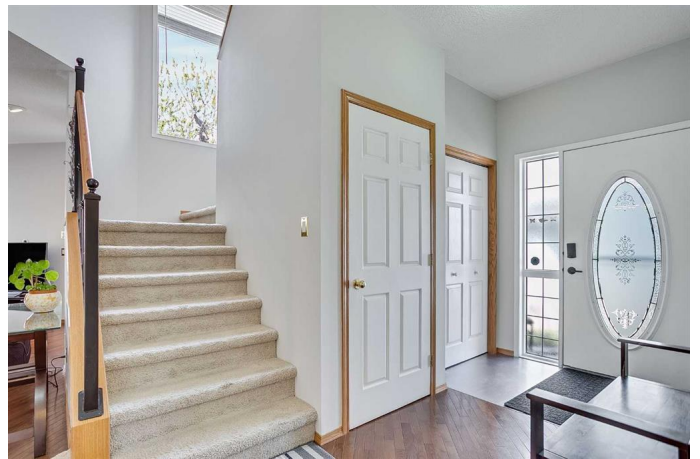
\$650,000

5 Bedroom, 3.00 Bathroom, 1,710 sqft

Residential on 0.13 Acres

Bridlewood, Calgary, Alberta

Welcome to 43 Bridlecreek Terrace SW—an inviting home situated on a large pie-shaped lot in the heart of family-friendly Bridlewood. This charming property offers a spacious and functional layout, perfect for growing families or savvy investors. Step inside to a bright and open 9' main floor featuring a well-appointed kitchen with ample cabinetry, a central island, and a dining area that flows seamlessly into the cozy living room. Fresh paint throughout creates a clean, move-in-ready feel. This home offers 5 bedrooms in total, including a large master bedroom with private ensuite and a large walk-in closet—a perfect retreat after a long day. Completing this floor, two additional bedrooms and a 4-pc bathroom. The fully finished basement includes two spacious bedrooms, offering privacy and flexibility for guests or older children. Downstairs, you'll also find a spacious living area ideal for working from home, as well as a flex room that can be used as a gym, media space, or play area—tailored to suit your needs. The massive west facing pie-shaped backyard offers plenty of room for outdoor enjoyment. Located close to schools, parks, shopping, and public transit, this well-rounded, move-in-ready home blends comfort, functionality, and location in one of Calgary's most welcoming communities. Recent upgrades include carpet, deck, HWT, roof, siding & gutters, some windows, leaf guards and blinds. Don't miss this one!



Built in 1998

Essential Information

| | |
|----------------|-------------|
| MLS® # | A2213729 |
| Price | \$650,000 |
| Bedrooms | 5 |
| Bathrooms | 3.00 |
| Full Baths | 2 |
| Half Baths | 1 |
| Square Footage | 1,710 |
| Acres | 0.13 |
| Year Built | 1998 |
| Type | Residential |
| Sub-Type | Detached |
| Style | 2 Storey |
| Status | Active |

Community Information

| | |
|-------------|---------------------------|
| Address | 43 Bridlecreek Terrace Sw |
| Subdivision | Bridlewood |
| City | Calgary |
| County | Calgary |
| Province | Alberta |
| Postal Code | T2Y3N7 |

Amenities

| | |
|----------------|------------------------|
| Parking Spaces | 4 |
| Parking | Double Garage Attached |
| # of Garages | 2 |

Interior

| | |
|-------------------|--|
| Interior Features | High Ceilings, Walk-In Closet(s) |
| Appliances | Dishwasher, Electric Stove, Range Hood, Refrigerator, Washer/Dryer, Window Coverings |
| Heating | Forced Air, Natural Gas |
| Cooling | None |
| Fireplace | Yes |
| # of Fireplaces | 1 |
| Fireplaces | Gas |

| | |
|--------------|----------------|
| Has Basement | Yes |
| Basement | Finished, Full |

Exterior

| | |
|-------------------|--------------------------|
| Exterior Features | Private Yard |
| Lot Description | Pie Shaped Lot |
| Roof | Asphalt Shingle |
| Construction | Vinyl Siding, Wood Frame |
| Foundation | Poured Concrete |

Additional Information

| | |
|----------------|---------------|
| Date Listed | May 1st, 2025 |
| Days on Market | 5 |
| Zoning | R-G |

Listing Details

| | |
|----------------|------------------------|
| Listing Office | Greater Property Group |
|----------------|------------------------|

Data is supplied by Pillar 9â„¢ MLS® System. Pillar 9â„¢ is the owner of the copyright in its MLS® System. Data is deemed reliable but is not guaranteed accurate by Pillar 9â„¢. The trademarks MLS®, Multiple Listing Service® and the associated logos are owned by The Canadian Real Estate Association (CREA) and identify the quality of services provided by real estate professionals who are members of CREA. Used under license.