

\$8 - 902 16 Street Sw, Medicine Hat

MLS® #A2212900

\$8

0 Bedroom, 0.00 Bathroom,
Commercial on 0.00 Acres

South West Industrial, Medicine Hat, Alberta

This 1,965 sq. ft. retail/office space in SW Light Industrial Medicine Hat offers versatility with five distinct areas and two restrooms. The storefront features large windows for ample natural light and includes three dedicated parking stalls plus shared side parking. The main area is finished with stylish vinyl plank flooring, ideal for retail or office use! Operating costs estimated at \$3/sq ft

Built in 1977

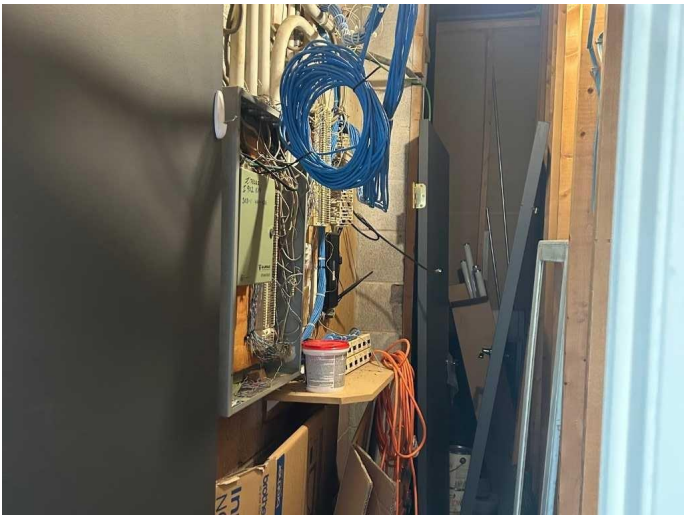
Essential Information

MLS® #	A2212900
Price	\$8
Bathrooms	0.00
Acres	0.00
Year Built	1977
Type	Commercial
Sub-Type	Retail
Status	Active

Community Information

Address	902 16 Street Sw
Subdivision	South West Industrial
City	Medicine Hat
County	Medicine Hat
Province	Alberta
Postal Code	T1A 8A4

Additional Information



Date Listed May 8th, 2025

Days on Market 65

Listing Details

Listing Office RE/MAX MEDALTA REAL ESTATE

Data is supplied by Pillar 9â„¢ MLSÂ® System. Pillar 9â„¢ is the owner of the copyright in its MLSÂ® System. Data is deemed reliable but is not guaranteed accurate by Pillar 9â„¢. The trademarks MLSÂ®, Multiple Listing ServiceÂ® and the associated logos are owned by The Canadian Real Estate Association (CREA) and identify the quality of services provided by real estate professionals who are members of CREA. Used under license.