

\$589,900 - 22 593037 Range Road 122, Rural Woodlands County

MLS® #A2211398

\$589,900

5 Bedroom, 3.00 Bathroom, 1,832 sqft
Residential on 5.46 Acres

NONE, Rural Woodlands County, Alberta

Stunning Acreage with Lake Views and Ample Space

Welcome to your dream home! This stunning property boasts 5 bedrooms, 3 bathrooms, and is situated on a picturesque 5.46-acre lot with breathtaking views of Shrum Lake. Perfectly blending modern amenities with serene countryside living, this home is a rare find.

Main Floor Highlights:

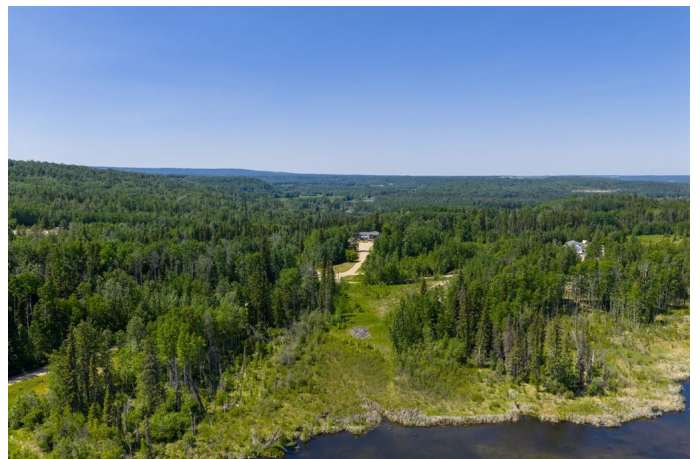
Open concept living area featuring a lovely gas fireplace, perfect for cozy evenings. A spacious kitchen with a large pantry, ideal for all your storage needs. Main floor laundry room for added convenience.

A screened-in deck space where you can relax. Plenty of deck space both off the front and back of the house.

Three well-appointed bedrooms and two bathrooms, with the primary bedroom featuring two walk-in closets.

Basement Features:

A fully finished basement offering two additional bedrooms and a bathroom. A second kitchen and a family room, perfect for entertaining or accommodating guests. A second laundry room for added practicality.



A large mudroom connected to the garage with a walk-out to grade, ideal for easy access and storage.

Additional Property Features:

A large 30x50 shop, providing ample space for projects and storage.

Partially fenced, making it suitable for horses.

Close proximity to town, providing the perfect balance of peaceful living and convenience.

This acreage is perfect for families, hobbyists, or anyone looking to enjoy the best of country living while still being close to town amenities.

Don't miss out on this incredible opportunity!

Built in 1970

Essential Information

MLS® #	A2211398
Price	\$589,900
Bedrooms	5
Bathrooms	3.00
Full Baths	3
Square Footage	1,832
Acres	5.46
Year Built	1970
Type	Residential
Sub-Type	Detached
Style	Acreage with Residence, Bungalow
Status	Active

Community Information

Address	22 593037 Range Road 122
Subdivision	NONE
City	Rural Woodlands County
County	Woodlands County
Province	Alberta
Postal Code	T7S 1N3

Amenities

Utilities	Electricity Connected, Natural Gas Connected, Sewer Connected, Water Connected
Parking Spaces	8
Parking	Double Garage Detached, Garage Faces Front, Gravel Driveway, Heated Garage, Single Garage Attached, Workshop in Garage
# of Garages	3

Interior

Interior Features	Bookcases, Built-in Features, Kitchen Island, Laminate Counters, Pantry, Vinyl Windows, Walk-In Closet(s)
Appliances	Dishwasher, Garage Control(s), Refrigerator, Stove(s), Washer/Dryer, Washer/Dryer Stacked
Heating	Forced Air, Natural Gas
Cooling	None
Fireplace	Yes
# of Fireplaces	1
Fireplaces	Family Room, Gas
Has Basement	Yes
Basement	Exterior Entry, Finished, Full, Walk-Out

Exterior

Exterior Features	Fire Pit, Private Entrance, Private Yard
Lot Description	Cul-De-Sac, Private, Views
Roof	Asphalt Shingle
Construction	Concrete, Vinyl Siding, Wood Frame
Foundation	Poured Concrete

Additional Information

Date Listed	April 12th, 2025
Days on Market	75
Zoning	CR

Listing Details

Listing Office	RE/MAX ADVANTAGE (WHITECOURT)
----------------	-------------------------------

Data is supplied by Pillar 9â„¢ MLSÂ® System. Pillar 9â„¢ is the owner of the copyright in its MLSÂ® System. Data is deemed reliable but is not guaranteed accurate by Pillar 9â„¢. The trademarks MLSÂ®, Multiple Listing ServiceÂ® and the associated logos are owned by The Canadian Real Estate Association (CREA) and identify the quality of services provided by real estate professionals who are members of CREA. Used under license.