

\$749,800 - 10625 155 Avenue, Rural Grande Prairie No. 1, County of

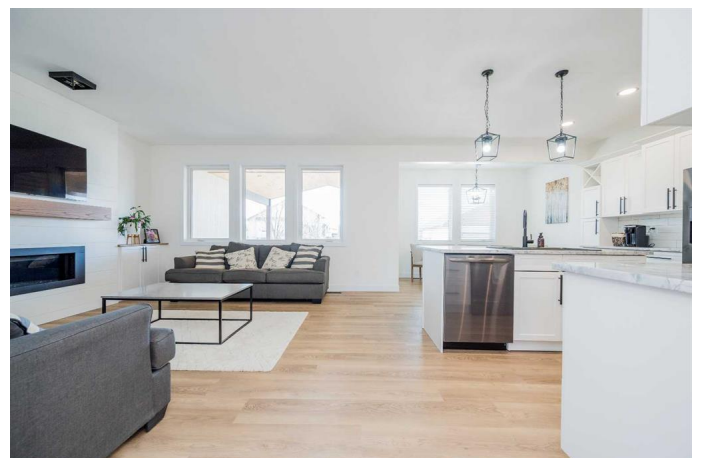
MLS® #A2210088

\$749,800

4 Bedroom, 3.00 Bathroom, 1,935 sqft
Residential on 0.21 Acres

Whispering Ridge, Rural Grande Prairie No. 1,
County of, Alberta

Beautiful 4-Bed, 2.5-Bath Home in Whispering Ridge. Enjoy city services with county taxes in this well-maintained home just steps from a park and close to schools. Recent updates include new flooring, hardware, light fixtures, trim, fresh paint, and a stunning new fireplace. The spacious living room features a gas fireplace and abundant natural light. The kitchen boasts new stainless appliances, an island with eating bar, walk-through pantry, and access to a large, covered deck. A convenient half-bath is located off the garage entry. Upstairs, the master suite offers a walk-in closet and a luxurious ensuite with soaker tub, separate shower, and dual sinks. Two additional bedrooms, a full bath with dual sinks, a bonus room, and laundry room complete the upper level. The basement is 60% finished with drywall, electrical, and one bedroom in place. Central A/C is an added bonus on hot summer days. The triple attached garage is finished, heated, and includes two floor drains, hot/cold taps, and a drive-through bay to the backyard. There's also RV parking and a finished, heated detached double garage with a concrete pad. The private, fenced yard features mature trees, a firepit, and a massive, maintenance-free two-tier deck with hot tubâ€”perfect for year-round enjoyment.



Built in 2014

Essential Information

MLS® #	A2210088
Price	\$749,800
Bedrooms	4
Bathrooms	3.00
Full Baths	2
Half Baths	1
Square Footage	1,935
Acres	0.21
Year Built	2014
Type	Residential
Sub-Type	Detached
Style	2 Storey
Status	Active

Community Information

Address	10625 155 Avenue
Subdivision	Whispering Ridge
City	Rural Grande Prairie No. 1, County of
County	Grande Prairie No. 1, County of
Province	Alberta
Postal Code	T8X 0M1

Amenities

Parking Spaces	6
Parking	Double Garage Detached, Driveway, Heated Garage, Parking Pad, RV Access/Parking, Triple Garage Attached, Drive Through
# of Garages	3

Interior

Interior Features	Double Vanity, Granite Counters, Kitchen Island, Open Floorplan, Pantry, Walk-In Closet(s)
Appliances	Dishwasher, Electric Stove, Garage Control(s), Refrigerator, Window Coverings
Heating	Forced Air
Cooling	Central Air
Fireplace	Yes

# of Fireplaces	1
Fireplaces	Gas
Has Basement	Yes
Basement	Full, Partially Finished

Exterior

Exterior Features	Fire Pit, Private Yard
Lot Description	Back Yard, Front Yard, Landscaped, Treed
Roof	Asphalt Shingle
Construction	Stone, Vinyl Siding
Foundation	Poured Concrete

Additional Information

Date Listed	April 9th, 2025
Days on Market	34
Zoning	RR-1

Listing Details

Listing Office	RE/MAX Grande Prairie
----------------	-----------------------

Data is supplied by Pillar 9â„¢ MLS® System. Pillar 9â„¢ is the owner of the copyright in its MLS® System. Data is deemed reliable but is not guaranteed accurate by Pillar 9â„¢. The trademarks MLS®, Multiple Listing Service® and the associated logos are owned by The Canadian Real Estate Association (CREA) and identify the quality of services provided by real estate professionals who are members of CREA. Used under license.