

\$198,000 - Block 1, Lot 12 Southshore Drive E, Widewater

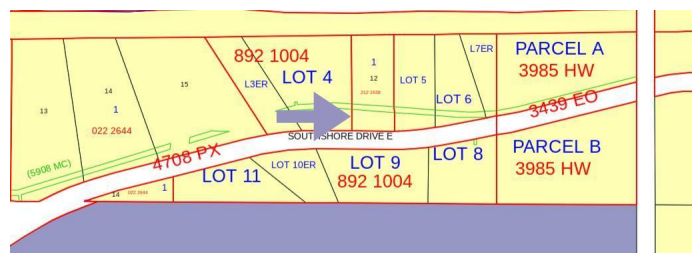
MLS® #A2199128

\$198,000

0 Bedroom, 0.00 Bathroom,
Land on 1.20 Acres

NONE, Widewater, Alberta

This is your chance to own over an acre of prime land on Southshore Drive in Widewater (between 75015 and 75020), offering breathtaking views of one of Alberta's most stunning lakes. Enjoy the privacy and space of acreage living while being just minutes from Canyon Creek and less than 20 minutes from Slave Lake. Essential groundwork is already in place, with power, water, sewer, and gas at the property line, and the approach is built, saving you time and money when building your dream home. Opportunities like this are rare, don't miss your chance to make this incredible location your own!



Essential Information

MLS® #	A2199128
Price	\$198,000
Bathrooms	0.00
Acres	1.20
Type	Land
Sub-Type	Residential Land
Status	Active

Community Information

Address	Block 1, Lot 12 Southshore Drive E
Subdivision	NONE
City	Widewater

County	Lesser Slave River No. 124, M.D. of
Province	Alberta
Postal Code	T0G 2M0

Amenities

Utilities	Electricity at Lot Line, Natural Gas at Lot Line, Water At Lot Line
-----------	---

Exterior

Lot Description	Few Trees, Lake
-----------------	-----------------

Additional Information

Date Listed	March 6th, 2025
Days on Market	164
Zoning	103 Residential Vacant

Listing Details

Listing Office	REAL BROKER
----------------	-------------

Data is supplied by Pillar 9â„¢ MLSÂ® System. Pillar 9â„¢ is the owner of the copyright in its MLSÂ® System. Data is deemed reliable but is not guaranteed accurate by Pillar 9â„¢. The trademarks MLSÂ®, Multiple Listing ServiceÂ® and the associated logos are owned by The Canadian Real Estate Association (CREA) and identify the quality of services provided by real estate professionals who are members of CREA. Used under license.