

# \$679,900 - 725 5 Street Sw, Sundre

MLS® #A2195783

**\$679,900**

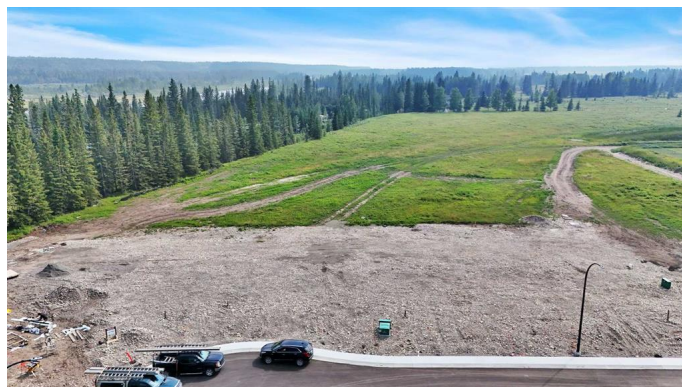
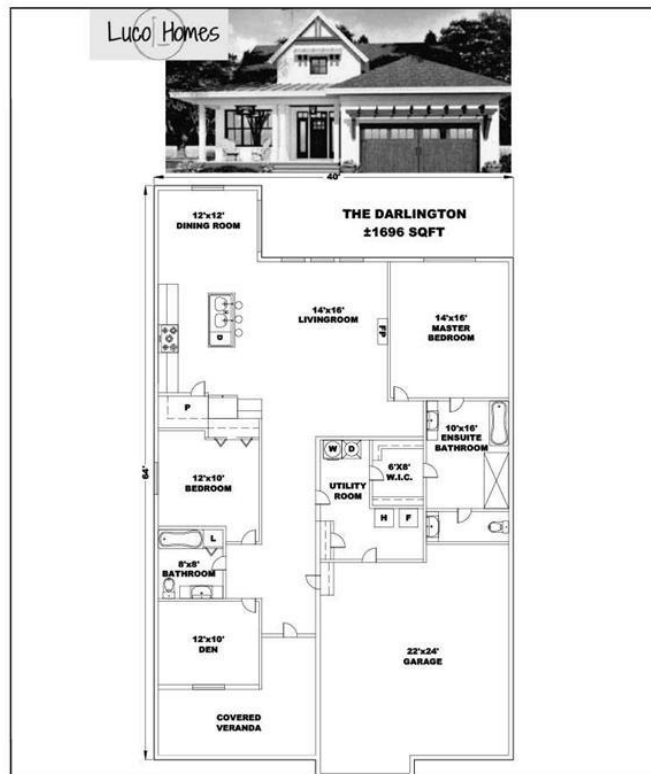
0 Bedroom, 0.00 Bathroom,  
Land on 0.16 Acres

NONE, Sundre, Alberta

The Darlington is a Beautifully Designed 1,696 sq. ft. Custom-Built Bungalow that Combines Elegance and Functionality. This Thoughtfully Crafted Home Features Two Spacious Bedrooms Plus a Versatile Den, Perfect for a Home Office or Guest space. The Bright and Airy Open-Concept Kitchen, Dining, and Living area is Filled With Natural Light, Creating a Warm and Inviting Atmosphere. A Stunning Gas Fireplace, Flanked by Custom-Built Shelving, Serves as the Focal Point of the Living Room. The Kitchen Boasts Sleek Maple Cabinets, Quartz Countertops, and a Convenient Pantry for Added Storage. The Luxurious Primary Suite Offers a Private Retreat with a Spacious Walk-in Closet and a Spa-Like 5-piece Ensuite. Outdoor Living is Just as Inviting, with a Covered Front Veranda for Relaxing and a Patio off the Dining Area, Perfect for Entertaining. Wrapped in Durable Engineered Wood Siding, The Darlington is a Perfect Blend of Quality Craftsmanship and Timeless Design!

## Essential Information

MLS® #	A2195783
Price	\$679,900
Bathrooms	0.00
Acres	0.16
Type	Land
Sub-Type	Residential Land



Status	Active
--------	--------

### Community Information

Address	725 5 Street Sw
Subdivision	NONE
City	Sundre
County	Mountain View County
Province	Alberta
Postal Code	T0M 1X0

### Additional Information

Date Listed	February 19th, 2025
Days on Market	79
Zoning	R1

### Listing Details

Listing Office	CIR Realty
----------------	------------

Data is supplied by Pillar 9â„¢ MLS® System. Pillar 9â„¢ is the owner of the copyright in its MLS® System. Data is deemed reliable but is not guaranteed accurate by Pillar 9â„¢. The trademarks MLS®, Multiple Listing Service® and the associated logos are owned by The Canadian Real Estate Association (CREA) and identify the quality of services provided by real estate professionals who are members of CREA. Used under license.