

\$59,900 - Pt Ne-24-45-7-w4, Rural Wainwright No. 61, M.D. of

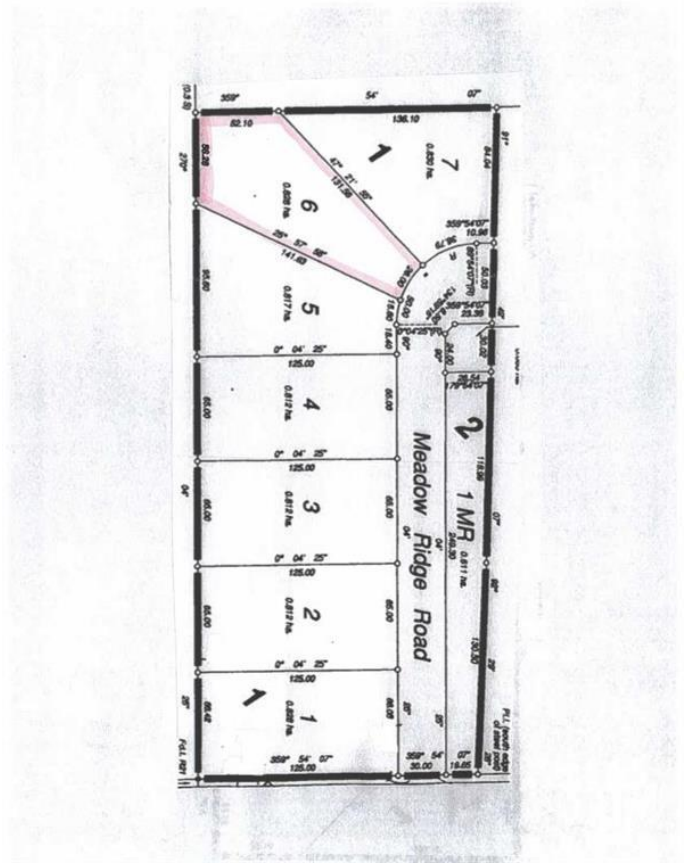
MLS® #A2193741

\$59,900

0 Bedroom, 0.00 Bathroom,
Land on 2.05 Acres

NONE, Rural Wainwright No. 61, M.D. of, Alberta

Welcome to Meadowlark Estates, a brand-new acreage community offering 7 spacious lots, each measuring 2 acres. Located less than 10 minutes north of Wainwright, these properties provide the perfect blend of peaceful country living with the convenience of nearby town amenities. Enjoy paved roads right to your driveway and soak in the beautiful unobstructed countryside views from your future dream home. Whether youâ€™re looking to build a family haven or a private retreat, these lots offer endless possibilitiesâ€”all at an affordable price. Donâ€™t miss your chance to secure a piece of this serene community. Build your dream home in Meadowlark Estates today!



Essential Information

MLS® #	A2193741
Price	\$59,900
Bathrooms	0.00
Acres	2.05
Type	Land
Sub-Type	Residential Land
Status	Active

Community Information

Address	Pt Ne-24-45-7-w4
---------	------------------

Subdivision	NONE
City	Rural Wainwright No. 61, M.D. of
County	Wainwright No. 61, M.D. of
Province	Alberta
Postal Code	T9W 1T1

Additional Information

Date Listed	February 10th, 2025
Days on Market	180
Zoning	CR

Listing Details

Listing Office	RE/MAX BAUGHAN REALTY
----------------	-----------------------

Data is supplied by Pillar 9â„¢ MLS® System. Pillar 9â„¢ is the owner of the copyright in its MLS® System. Data is deemed reliable but is not guaranteed accurate by Pillar 9â„¢. The trademarks MLS®, Multiple Listing Service® and the associated logos are owned by The Canadian Real Estate Association (CREA) and identify the quality of services provided by real estate professionals who are members of CREA. Used under license.