

\$1,099,000 - 5310 50 Avenue, Sylvan Lake

MLS® #A2183679

\$1,099,000

0 Bedroom, 0.00 Bathroom,
Land on 2.29 Acres

Downtown, Sylvan Lake, Alberta

Multi-family or townhouse development site with 600' of frontage on the picturesque Sylvan Lake Golf and Country Club. Plans may be available for a large commercial and residential condo. Alternatively, it would be ideal for a multi-family investment property in a market where the vacancy rate is currently almost zero. Property is just short walk to downtown and the beach.

Essential Information

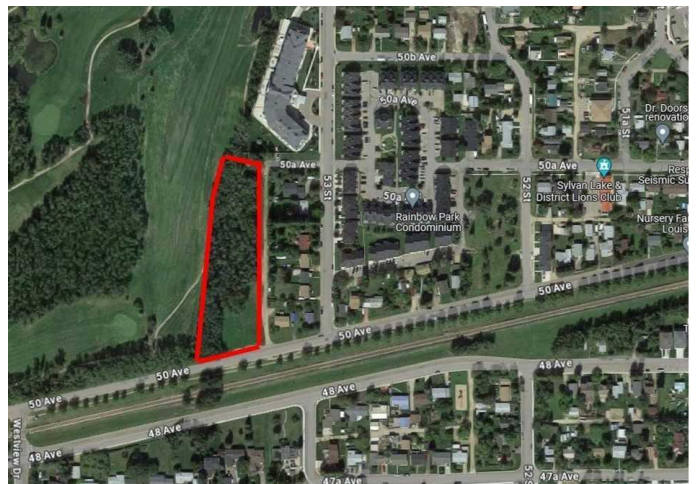
| | |
|-----------|------------------|
| MLS® # | A2183679 |
| Price | \$1,099,000 |
| Bathrooms | 0.00 |
| Acres | 2.29 |
| Type | Land |
| Sub-Type | Residential Land |
| Status | Active |

Community Information

| | |
|-------------|-----------------|
| Address | 5310 50 Avenue |
| Subdivision | Downtown |
| City | Sylvan Lake |
| County | Red Deer County |
| Province | Alberta |
| Postal Code | T4S1E7 |

Amenities

| | |
|-----------|--|
| Utilities | Electricity Available, Natural Gas Available |
|-----------|--|



Exterior

Lot Description Near Golf Course, On Golf Course, No Neighbours Behind

Additional Information

Date Listed January 1st, 2025
Days on Market 208
Zoning WDCD - Waterfront Direct

Listing Details

Listing Office RE/MAX real estate central alberta

Data is supplied by Pillar 9â„¢ MLS® System. Pillar 9â„¢ is the owner of the copyright in its MLS® System. Data is deemed reliable but is not guaranteed accurate by Pillar 9â„¢. The trademarks MLS®, Multiple Listing Service® and the associated logos are owned by The Canadian Real Estate Association (CREA) and identify the quality of services provided by real estate professionals who are members of CREA. Used under license.