

\$559,875 - 714 Violet Place W, Lethbridge

MLS® #A2180225

\$559,875

3 Bedroom, 3.00 Bathroom, 1,673 sqft

Residential on 0.09 Acres

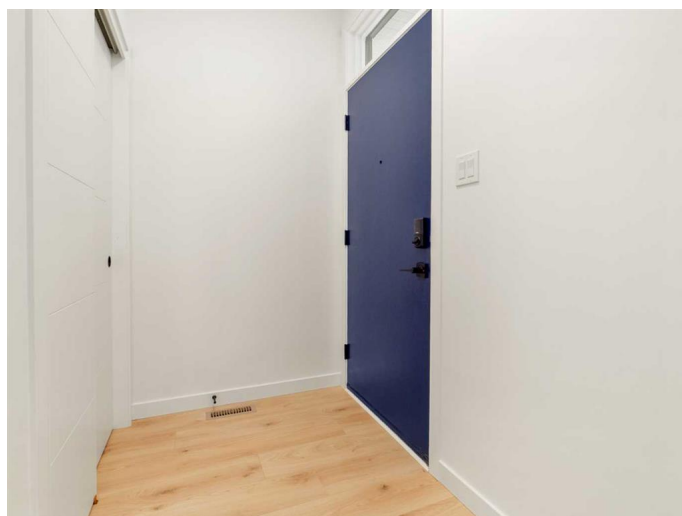
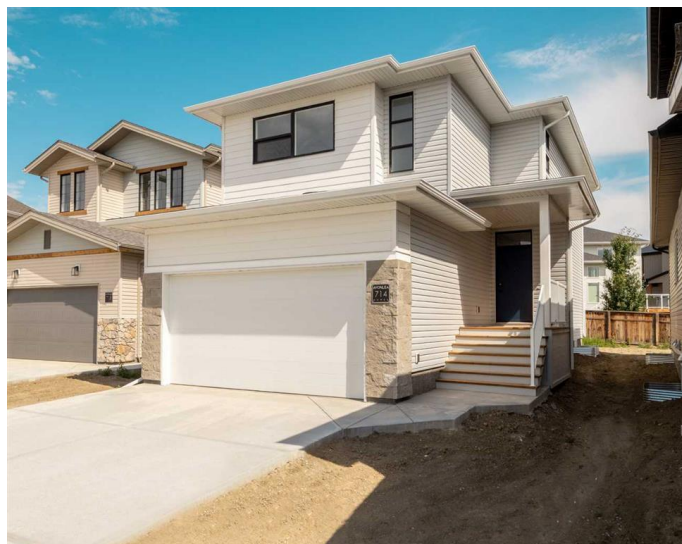
Country Meadows Estates, Lethbridge, Alberta

The "Isla" by Avonlea Homes is the perfect family home. Located in the architecturally controlled community of Country Meadows. The main level hosts a notched out dining nook, eating bar on the kitchen island, walk in pantry. Large windows and tall ceilings make the main floor feel very bright and open. Also notice the new look of the flat painted ceilings. Upstairs resides the 3 bedrooms with the master including an en-suite and walk in closet. The ensuite has a large 5 foot walk-in shower and His/Her sinks. Great Bonus room area for the family to enjoy. Bonus room is in the middle of the upstairs giving privacy to the master retreat from the kids bedrooms. Convenience of laundry is also upstairs. The basement is undeveloped but set up for family room, bedroom and another full bath. Home is virtually Staged. New Home Warranty. FIRST TIME BUYER! ASK ABOUT THE NEW GOVERNMENT GST REBATE. Certain restrictions apply

Built in 2024

Essential Information

MLS® #	A2180225
Price	\$559,875
Bedrooms	3
Bathrooms	3.00
Full Baths	2
Half Baths	1



Square Footage	1,673
Acres	0.09
Year Built	2024
Type	Residential
Sub-Type	Detached
Style	2 Storey
Status	Active

Community Information

Address	714 Violet Place W
Subdivision	Country Meadows Estates
City	Lethbridge
County	Lethbridge
Province	Alberta
Postal Code	T1J5V1

Amenities

Parking Spaces	4
Parking	Double Garage Attached
# of Garages	2

Interior

Interior Features	Kitchen Island, Pantry, Walk-In Closet(s)
Appliances	Dishwasher, Microwave, Range Hood, Refrigerator, Gas Range
Heating	Forced Air
Cooling	None
Has Basement	Yes
Basement	Full, Unfinished

Exterior

Exterior Features	None
Lot Description	Back Yard
Roof	Asphalt Shingle
Construction	Concrete, Vinyl Siding, Wood Frame
Foundation	Poured Concrete

Additional Information

Date Listed	December 16th, 2024
Days on Market	270

Zoning

RCL

Listing Details

Listing Office

RE/MAX REAL ESTATE - LETHBRIDGE

Data is supplied by Pillar 9â„¢ MLS® System. Pillar 9â„¢ is the owner of the copyright in its MLS® System. Data is deemed reliable but is not guaranteed accurate by Pillar 9â„¢. The trademarks MLS®, Multiple Listing Service® and the associated logos are owned by The Canadian Real Estate Association (CREA) and identify the quality of services provided by real estate professionals who are members of CREA. Used under license.