

\$115,000 - On #2/35 Highway, Rural Peace No. 135, M.D. of

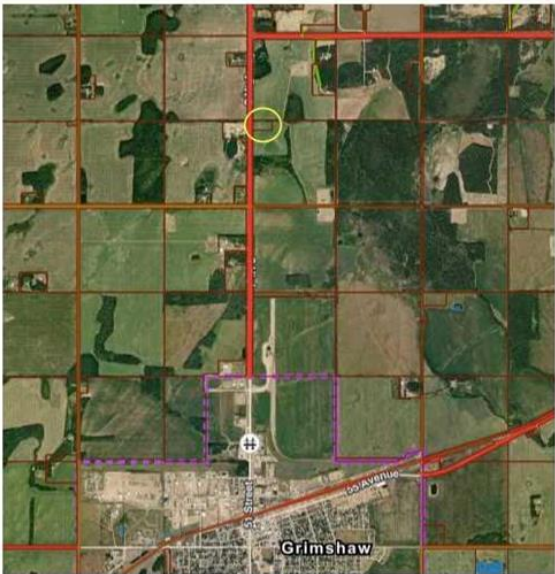
MLS® #A2177889

\$115,000

0 Bedroom, 0.00 Bathroom,
Land on 4.15 Acres

NONE, Rural Peace No. 135, M.D. of, Alberta

Great opportunity to build your dream home!
Minutes from Grimshaw with highway frontage
so no gravel to travel. This acreage has an
existing water well but is otherwise a blank
slate so you will have minimal work to
complete prior to building or bringing a home
in. Site is not treed so you can plant them
wherever you like! Power and gas lines are
close by so easy to bring onto the property.



Essential Information

MLS® #	A2177889
Price	\$115,000
Bathrooms	0.00
Acres	4.15
Type	Land
Sub-Type	Residential Land
Status	Active

Community Information

Address	On #2/35 Highway
Subdivision	NONE
City	Rural Peace No. 135, M.D. of
County	Peace No. 135, M.D. of
Province	Alberta
Postal Code	T0H 1W0



Additional Information

Date Listed	November 6th, 2024
Days on Market	310
Zoning	CR - Country Residential

Listing Details

Listing Office	RE/MAX Northern Realty
----------------	------------------------

Data is supplied by Pillar 9â„¢ MLS® System. Pillar 9â„¢ is the owner of the copyright in its MLS® System. Data is deemed reliable but is not guaranteed accurate by Pillar 9â„¢. The trademarks MLS®, Multiple Listing Service® and the associated logos are owned by The Canadian Real Estate Association (CREA) and identify the quality of services provided by real estate professionals who are members of CREA. Used under license.