

# \$1,800,000 - 1450 Strachan Road Se, Medicine Hat

MLS® #A2167935

**\$1,800,000**

0 Bedroom, 0.00 Bathroom,  
Commercial on 2.06 Acres

Southland, Medicine Hat, Alberta

This easily accessible and highly visible stand-alone commercial building is located just off the Trans-Canada Highway. The 8,249 SF building features a modern showroom, three private offices with additional office space located on the second floor. Users can benefit from the staff lounge, kitchenette, a parts and storage space with a mezzanine, and a well-equip shop with trench drainage. The shop area offers three drive-in bay with 12'x12' OHDs.

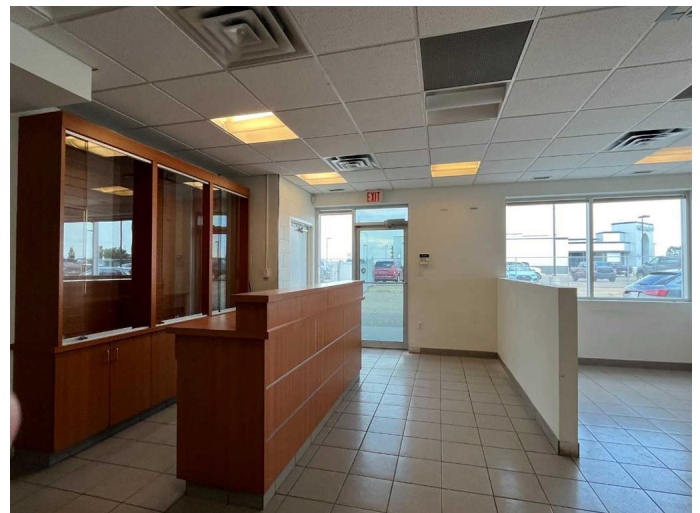
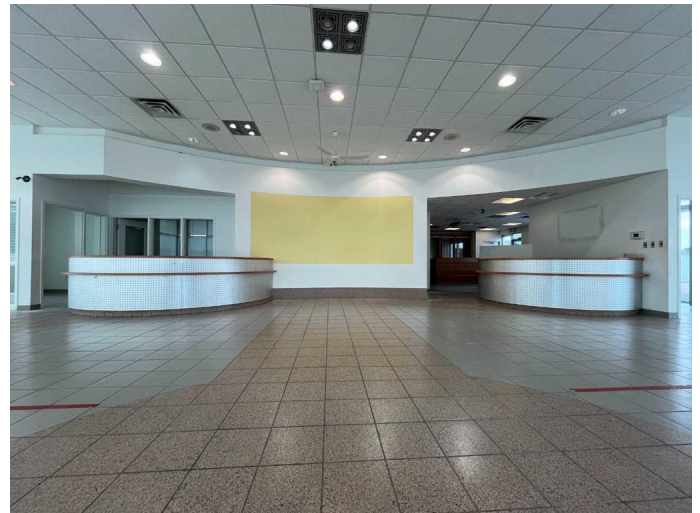
Built in 2005

## Essential Information

MLS® #	A2167935
Price	\$1,800,000
Bathrooms	0.00
Acres	2.06
Year Built	2005
Type	Commercial
Sub-Type	Retail
Status	Active

## Community Information

Address	1450 Strachan Road Se
Subdivision	Southland
City	Medicine Hat
County	Medicine Hat
Province	Alberta
Postal Code	T1B4V2



**Additional Information**

Date Listed	September 23rd, 2024
Days on Market	227
Zoning	C-H

**Listing Details**

Listing Office	AVISON YOUNG
----------------	--------------

Data is supplied by Pillar 9â„¢ MLS® System. Pillar 9â„¢ is the owner of the copyright in its MLS® System. Data is deemed reliable but is not guaranteed accurate by Pillar 9â„¢. The trademarks MLS®, Multiple Listing Service® and the associated logos are owned by The Canadian Real Estate Association (CREA) and identify the quality of services provided by real estate professionals who are members of CREA. Used under license.