

\$1,125,000 - 62083 Township 710 Other, Rural Grande Prairie No. 1, County of

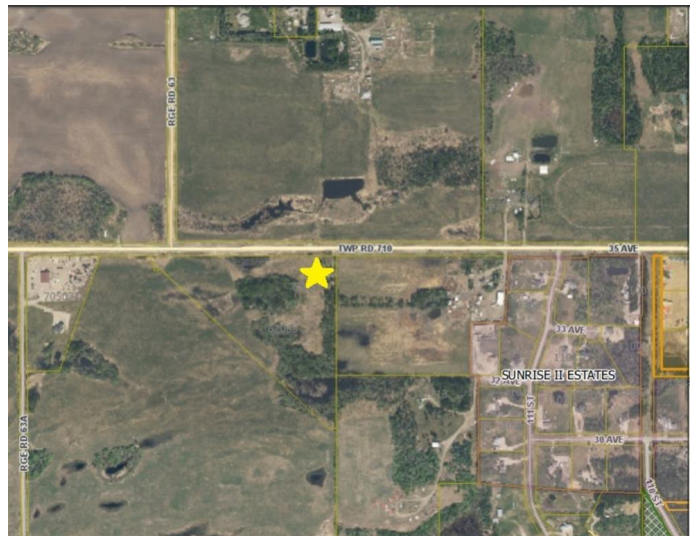
MLS® #A2148363

\$1,125,000

0 Bedroom, 0.00 Bathroom,
Land on 5.00 Acres

NONE, Rural Grande Prairie No. 1, County of, Alberta

Correction Line West Industrial. Just south of Grande Prairie with convenient access to Highway 40, Correction Line, 116 st and future southwest bypass. This RM-1 Industrial land is some of the only available Industrial land on south side of town. Subdivision is now approved for 5 and 8 acre lots and flexibility available for larger parcels if desired. Lots will include: paved roads, power, gas, Aquatera water and County taxes. Great visibility from Correction Line, 116 St and future South West Bypass. Contact your realtor for more details or information package. Vendor is a licensed REALTOR® in the Province of Alberta



Essential Information

MLS® #	A2148363
Price	\$1,125,000
Bathrooms	0.00
Acres	5.00
Type	Land
Sub-Type	Industrial Land
Status	Active



Community Information

Address	62083 Township 710 Other
Subdivision	NONE
City	Rural Grande Prairie No. 1, County of

County	Grande Prairie No. 1, County of
Province	Alberta
Postal Code	T8W 5B5

Additional Information

Date Listed	July 10th, 2024
Days on Market	302
Zoning	RM-1

Listing Details

Listing Office	Royal LePage - The Realty Group
----------------	---------------------------------

Data is supplied by Pillar 9â„¢ MLSÂ® System. Pillar 9â„¢ is the owner of the copyright in its MLSÂ® System. Data is deemed reliable but is not guaranteed accurate by Pillar 9â„¢. The trademarks MLSÂ®, Multiple Listing ServiceÂ® and the associated logos are owned by The Canadian Real Estate Association (CREA) and identify the quality of services provided by real estate professionals who are members of CREA. Used under license.