

\$73,000 - 9110 129 Avenue, Peace River

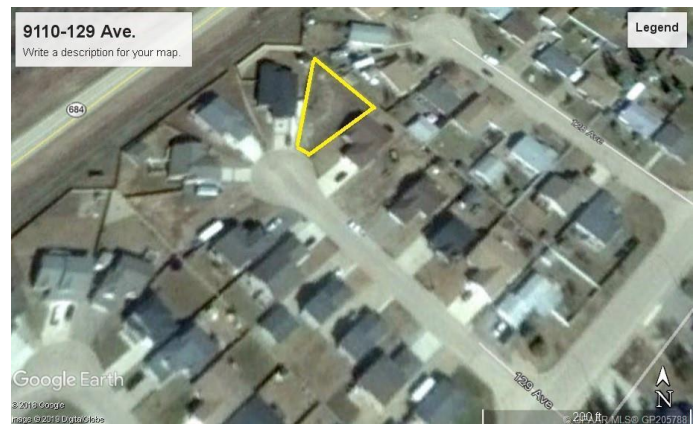
MLS® #A2147375

\$73,000

0 Bedroom, 0.00 Bathroom,
Land on 0.15 Acres

Shaftesbury Estates, Peace River, Alberta

If you are looking for a large lot in a great neighborhood to build your dream home on, then this lot in Shaftesbury Estates might be just what you have been waiting for. Located near the end of a quiet cul de sac with lots of room to build your home. The large irregular shaped lot is around a 100 feet wide at the back which would give you a nice sized back yard. Call for details.



Essential Information

MLS® #	A2147375
Price	\$73,000
Bathrooms	0.00
Acres	0.15
Type	Land
Sub-Type	Residential Land
Status	Active

Community Information

Address	9110 129 Avenue
Subdivision	Shaftesbury Estates
City	Peace River
County	Peace No. 135, M.D. of
Province	Alberta
Postal Code	T8S 1W9

Exterior

Lot Description	Irregular Lot
-----------------	---------------

Additional Information

Date Listed	July 5th, 2024
Days on Market	430
Zoning	residential

Listing Details

Listing Office	Royal LePage Valley Realty
----------------	----------------------------

Data is supplied by Pillar 9â„¢ MLS® System. Pillar 9â„¢ is the owner of the copyright in its MLS® System. Data is deemed reliable but is not guaranteed accurate by Pillar 9â„¢. The trademarks MLS®, Multiple Listing Service® and the associated logos are owned by The Canadian Real Estate Association (CREA) and identify the quality of services provided by real estate professionals who are members of CREA. Used under license.