

# \$139,000 - 151, 41310 Range Road 282, Rural Lacombe County

MLS® #A2128228

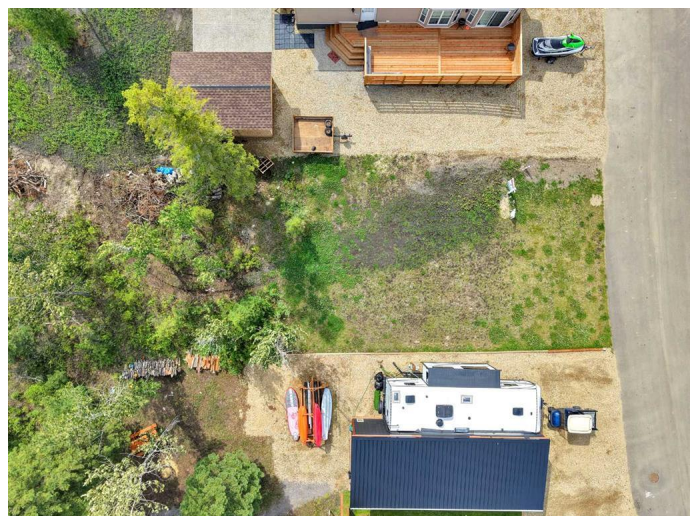
**\$139,000**

0 Bedroom, 0.00 Bathroom,  
Land on 0.10 Acres

DeGraff Resort, Rural Lacombe County,  
Alberta

Escape the hustle and bustle of the city and embrace the peaceful and relaxing lifestyle that awaits you at Degraff RV and Residence Resort. With Phase 3 now available, you can own your very own private lake lot and indulge in the beauty of Gull Lake's eastern shores. From breathtaking sunsets to serene forested green space, this community offers a tranquil haven for you to call home. 42' X 105' lot backing onto the trees and green space. This lot will be prepared with a gravel pad. Live here year-round or part-time the choice is yours!

Located in the heart of central Alberta, just 15 minutes west of Lacombe, Degraff RV, and Residence Resort is situated on the eastern shores of the stunning Gull Lake. With its convenient location and easy access from Highway 12, this community offers the perfect opportunity to own your own lake lot and indulge in the ultimate lakefront lifestyle. This gated lakefront community offers an array of year-round amenities that cater to every interest and lifestyle. Enjoy a leisurely stroll along the 2000-meter walking trails, have a picnic by the pond, build sandcastles on the beach, or challenge your friends to a game at the horseshoe pits. Sports enthusiasts can take advantage of the pickleball and basketball courts, as well as the nearby golf courses at Lacombe Golf and Country Club, Nursery, and



Ponoka GCC.

Families with children will delight in exploring the two playgrounds, fishing docks, and private boat launch. With year-round washrooms and shower facilities, as well as storage yards, you can extend your stay at the lake and make memories that last a lifetime. Don't miss the opportunity to own your place at the lake and start living the life you've always dreamed of. A great place to relax and focus on making your yard the envy of the neighborhood. The best part? The condo fees are only \$180.00 per month they include park maintenance, professional management, water, and sewer. This is an exceptional community where you can start enjoying the ultimate lakefront lifestyle.

**Essential Information**

MLS® #	A2128228
Price	\$139,000
Bathrooms	0.00
Acres	0.10
Type	Land
Sub-Type	Residential Land
Status	Active

**Community Information**

Address	151, 41310 Range Road 282
Subdivision	DeGraff Resort
City	Rural Lacombe County
County	Lacombe County
Province	Alberta
Postal Code	T4L 2N3

**Amenities**

Amenities	Beach Access, Playground, Laundry, Visitor Parking
-----------	--

**Additional Information**

Date Listed	May 2nd, 2024
-------------	---------------

Days on Market	496
Zoning	LR

**Listing Details**

Listing Office	RE/MAX real estate central alberta
----------------	------------------------------------

Data is supplied by Pillar 9â„¢ MLS® System. Pillar 9â„¢ is the owner of the copyright in its MLS® System. Data is deemed reliable but is not guaranteed accurate by Pillar 9â„¢. The trademarks MLS®, Multiple Listing Service® and the associated logos are owned by The Canadian Real Estate Association (CREA) and identify the quality of services provided by real estate professionals who are members of CREA. Used under license.