

# \$749,900 - 1 To 6, 358 Cambridge Street Se, Medicine Hat

MLS® #A2109821

**\$749,900**

0 Bedroom, 0.00 Bathroom, 5,400 sqft  
Multi-Family on 0.00 Acres

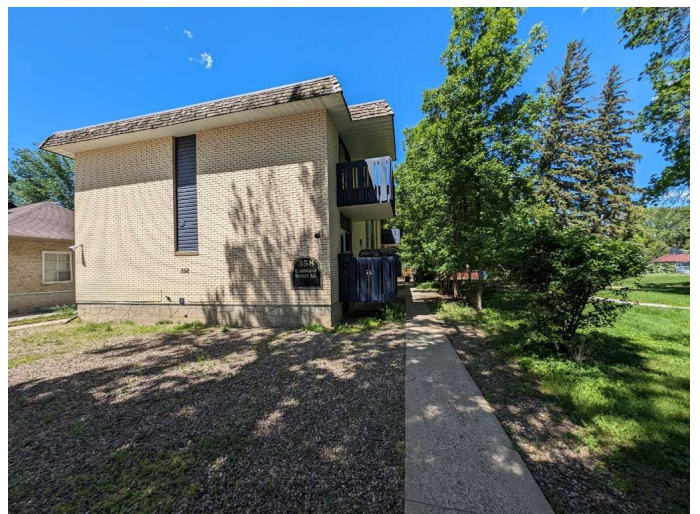
SE Hill, Medicine Hat, Alberta

Excellent opportunity for real estate investors looking for a multi-unit building. This 6 unit apartment enjoys a central location on the quiet SE Hill and overlooks a beautiful park; which is almost an extension of the property. Five 2 bedroom units and one 1 bedroom unit. All units come with a fridge, stove and dishwasher. Free laundry is available for tenants and off street parking at the rear of the building. Recent updates to the building: Roof - 5 Years ago, New Boilers x 2 - 2022, Backflow Preventer installed and Washer & Dryer - 2022. 3 of the suites have been updated/Renovated 2022/2023. Enhance your investment portfolio by adding this property today. For a private tour or additional information, please don't hesitate to contact.

Built in 1972

## Essential Information

MLS® #	A2109821
Price	\$749,900
Bathrooms	0.00
Square Footage	5,400
Acres	0.00
Year Built	1972
Type	Multi-Family
Sub-Type	Apartment
Status	Active



## Community Information

Address	1 To 6, 358 Cambridge Street Se
Subdivision	SE Hill
City	Medicine Hat
County	Medicine Hat
Province	Alberta
Postal Code	T1A 0S8

## Amenities

Parking Spaces	6
----------------	---

## Interior

Appliances	Wall/Window Air Conditioner, Dishwasher, Refrigerator, Stove(s), Washer/Dryer
Heating	Baseboard, Boiler
# of Stories	2

## Exterior

Roof	Membrane
Construction	Brick, Concrete

## Additional Information

Date Listed	March 6th, 2024
Days on Market	426
Zoning	R-MD

## Listing Details

Listing Office	ROYAL LEPAGE COMMUNITY REALTY
----------------	-------------------------------

Data is supplied by Pillar 9â„¢ MLS® System. Pillar 9â„¢ is the owner of the copyright in its MLS® System. Data is deemed reliable but is not guaranteed accurate by Pillar 9â„¢. The trademarks MLS®, Multiple Listing Service® and the associated logos are owned by The Canadian Real Estate Association (CREA) and identify the quality of services provided by real estate professionals who are members of CREA. Used under license.