

\$3,900,000 - 4;25;24;26 Se Strathmore

244046 Rge Rd 251,

MLS® #A2108975

\$3,900,000

0 Bedroom, 0.00 Bathroom,
Land on 79.50 Acres

NONE, Strathmore, Alberta

Located within the Town of Strathmore, a rare opportunity to own approximately 80 acres for future development. Town of Strathmore has an Area Structure Plan available.



Essential Information

MLS® #	A2108975
Price	\$3,900,000
Bathrooms	0.00
Acres	79.50
Type	Land
Sub-Type	Residential Land
Status	Active

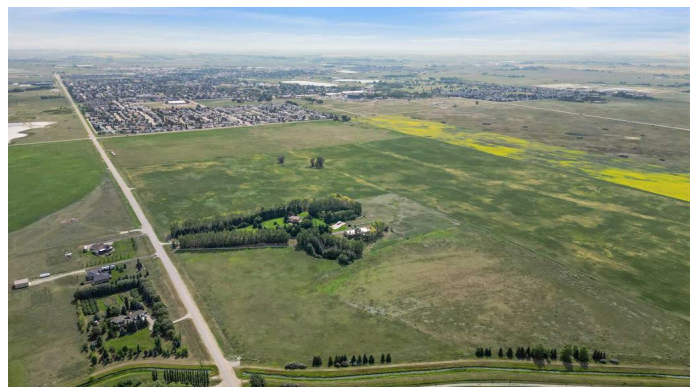
Community Information

Address	4;25;24;26 Se 244046 Rge
Subdivision	NONE
City	Strathmore
County	Wheatland County
Province	Alberta
Postal Code	T1P 0P1

Additional Information

Date Listed	February 26th, 2024
Days on Market	509
Zoning	GA

Listing Details



Listing Office

CIR Realty

Data is supplied by Pillar 9â„¢ MLSÂ® System. Pillar 9â„¢ is the owner of the copyright in its MLSÂ® System. Data is deemed reliable but is not guaranteed accurate by Pillar 9â„¢. The trademarks MLSÂ®, Multiple Listing ServiceÂ® and the associated logos are owned by The Canadian Real Estate Association (CREA) and identify the quality of services provided by real estate professionals who are members of CREA. Used under license.